



GstarCAD Network License Details Checking

GstarCAD 2023



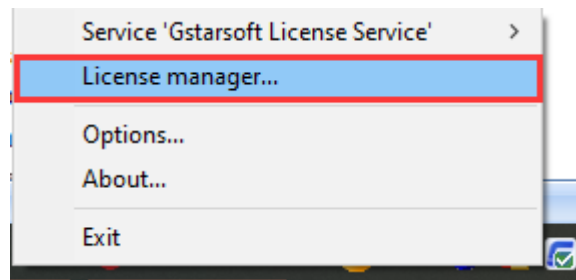
GstarCAD Network License Details Checking

1. Checking From GstarCAD License Manager (Server)

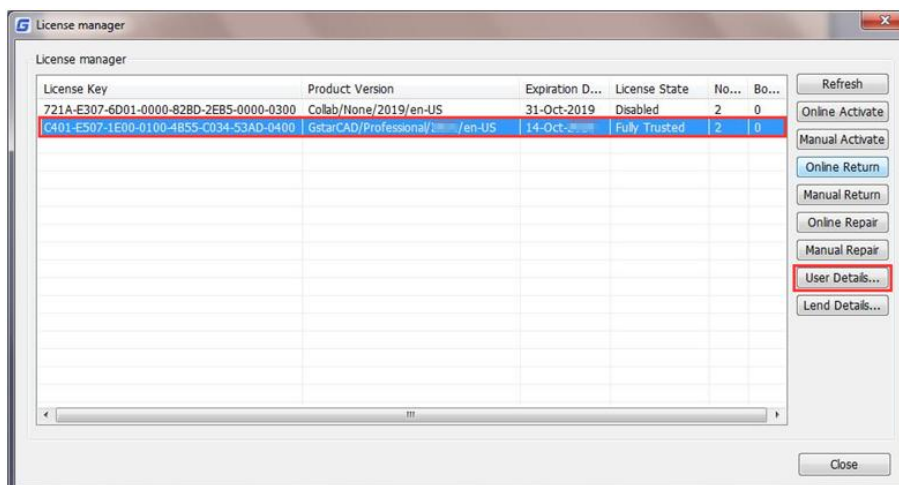
1.1 Check The Users Who Are Using The Network License from Your Server

GstarCAD network license supports a pool of licenses (nodes) on the server and users who have the authorization (server IP and license Port) can activate the corresponding version from their side in the same LAN. When users quit GstarCAD 2022, the license will be back automatically to license manager.

GstarCAD Network License Manager not only supports the network license activation and return, but also supports checking the network license details. Before checking the details, make sure the service is started and then right click on the tray icon of GstarCAD Network License Manger. Click [License Manager](#).



From the User Details, you will see the network licenses using information. Choose the correct product and click [User Details](#) from License manager.



You can check the user numbers who are using the licenses in User Details to know the remaining nodes available. For example: If your network license has two nodes and both are activated and currently being used. So there will be no nodes left for other users to activate or borrow. If one from the two users quits GstarCAD 2022, the node will be back to license manager, and there will be one license available which can be activated or borrowed.

User Name	Machine Name	User IP	Number	Date
ovs	ovs-PC	172.20.70.1	1	03:22:22
win 10	Win10	192.168.0.251	1	00:03:06

OK

1.2 Check the Users Who Have Borrowed the Network License from Your Server

GstarCAD network license allows borrowing the node for a period from the server. The license manager list shows the lent node number and the nodes left. The [Lend Detail](#) shows the lend information.

For example: If your network license has two nodes totally, one user has borrowed a node from the server, so only one node is available and can be activated or borrowed.

License Key	Product Version	Expiration ...	License State	Node	Borrow
721A-E307-6D01-0000-828D-2E85-0000-0300	Collab/None/2019/en-US	31-Oct-2019	Disabled	2	0
C401-E507-1E00-0100-4855-C034-53AD-0400	GstarCAD/Professional/2019/en-US	14-Oct-2019	Fully Trusted	1	1

Refresh
Online Activate
Manual Activate
Online Return
Manual Return
Online Repair
Manual Repair
User Details...
Lend Details...

Close

Borrowed ID	Machine Name	User IP	Expiration Date
FID-1600325792-000	Win10	192.168.0.148	01-Oct-2019

OK

Note:

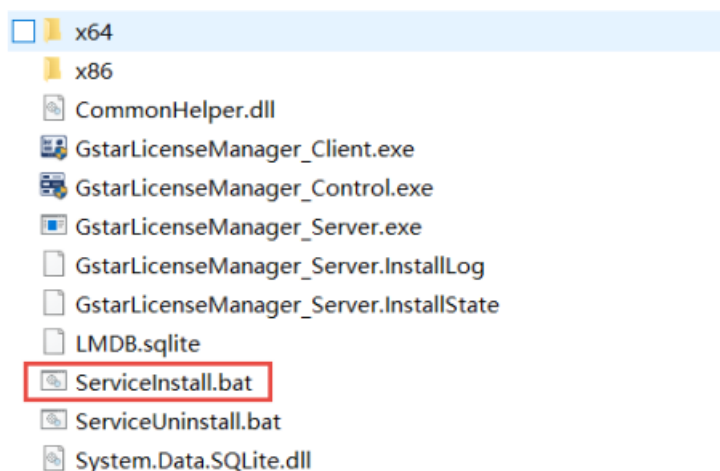
1. Few security softwares (anti-virus software) will cause GstarCAD Network License Manager run abnormally; you can quit the security software or add GstarCAD Network License Manager to trusted path.
2. The Server computer name should be in English.
3. If the server computer has old GstarCAD License Manager version installed, please turn it off first, then install the latest GstarCAD Network License Manager.

2. Checking From GstarCAD Network License Dashboard

Download and Install GstarCAD Network License Dashboard. Please follow the steps below:

1. Installation

- 1) Please decompress the GstarCAD Network License Dashboard.zip file.
- 2) Please double click [ServiceInstall.bat](#).

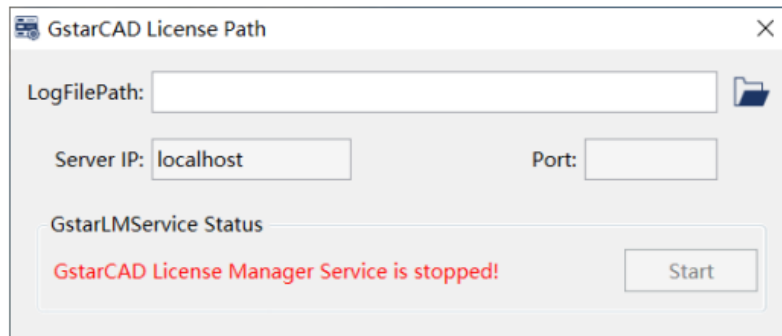


Two icons will be created on desktop: [GstarCAD License Dashboard](#) and [GstarCAD License Path](#).



2. Settings of GstarCAD License Path

- 1) Please double click [GstarCAD License Path](#) icon to call the window.

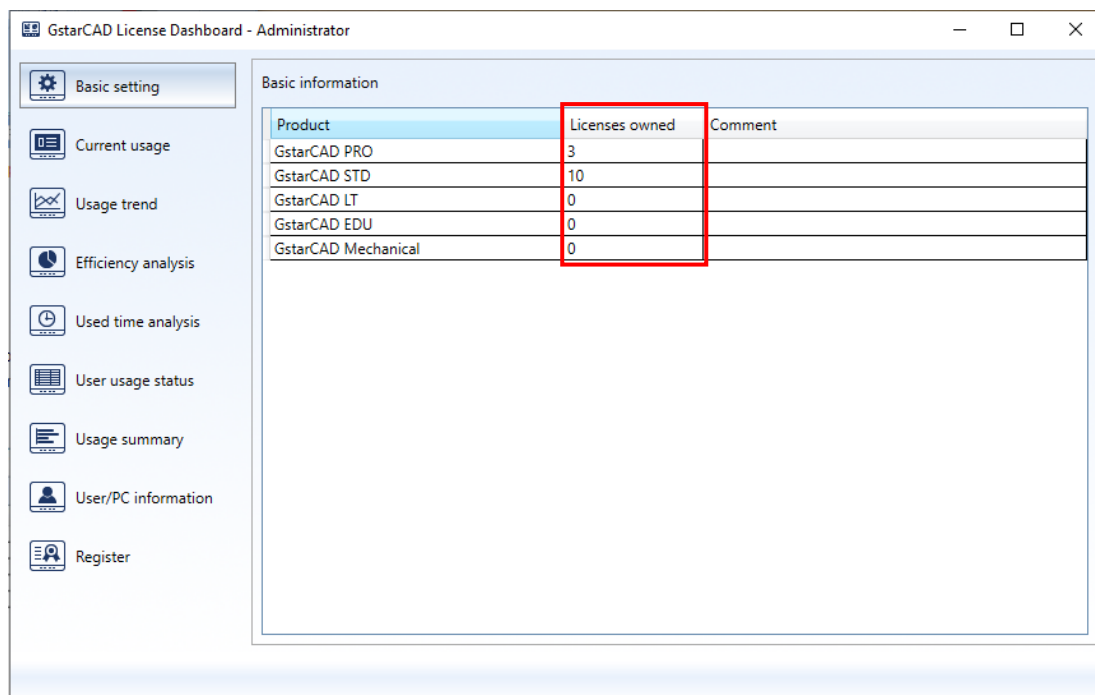


- 2) Please select the location path of LogFilePath: default path: **【C:\ProgramData\GstarCAD\LmsLog\liclog.log】**
You may change the path of liclog.log in GstarCAD LMSTools, please select the correct path of the log file.
- 3) Please click **Start** button to start the service.

3. GstarCAD License Dashboard

- 1) Please double click [GstarCAD License Dashboard](#) icon to call the window.
- 2) Basic Setting

Please click **Basic Setting**, and then please input the license numbers of different products that you have purchased. You can find the license numbers from the purchase orders, you may also find the license numbers on GstarCAD License Manager (Server).

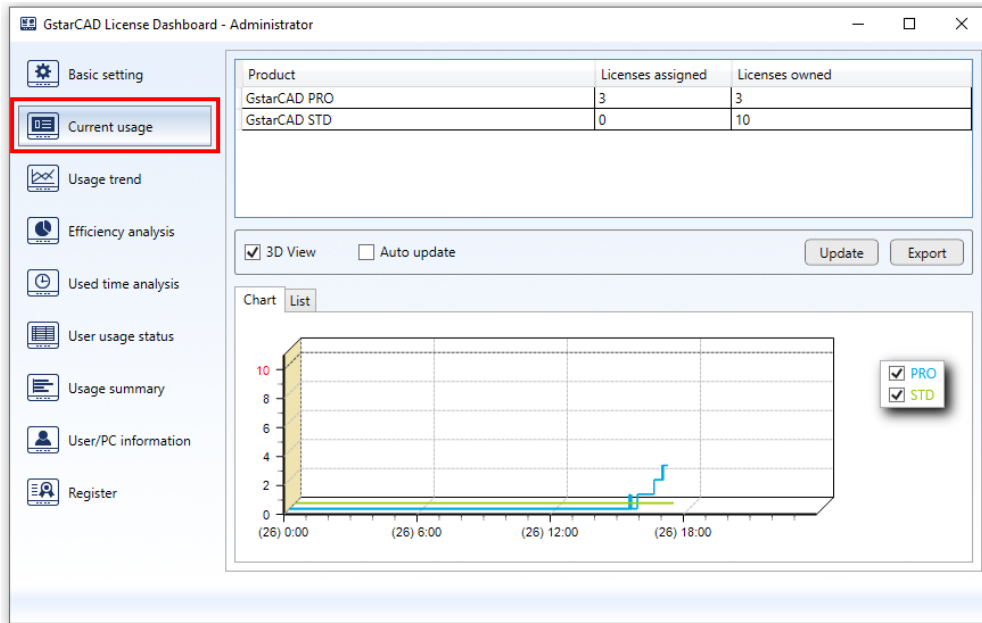


3) Current Usage

Please click [Current Usage](#). In Current Usage, you can check the information of Product, License Assigned, License Owned, Users, Status, Start Time and Used Time.

You can choose to check the information in [Chart](#) and [List](#). You can update the information by clicking button [Update](#) and Chart and List both are updated; or you can select option [Auto Update](#) so that the information will be real-time update. You can also export the current usage list information as Excel.

Chart: Here you can view the usage graphically during a period of time, you can choose the duration by pressing and dragging in the chart. It could also help you decide whether you need more licenses or not.



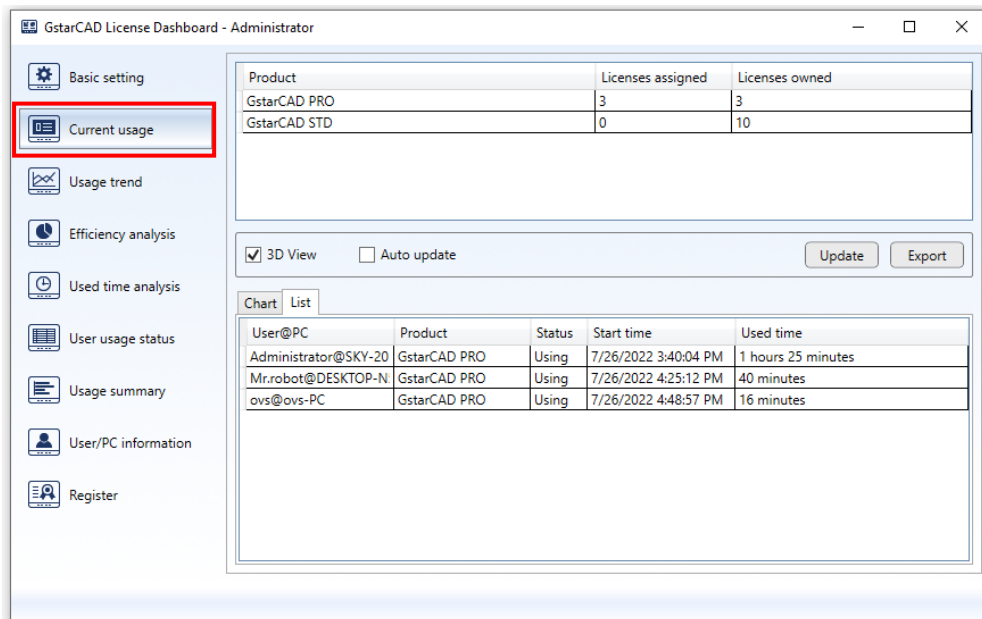
List: Here you can see the detailed information:

User shows who are using the licenses.

Product shows what products are being used.

Start Time shows when the licenses are started.

Used Time shows how long the licenses have been used.





GstarCAD 2023



■ <https://www.gstarcad.net/>