



Complete Features Guide

GstarCAD 2022



GstarCAD 2022 Content

1.	Perfect Compatibility	3
2.	Flexible Licensing	6
2.1.	Licensing Policy	6
2.2.	Licensing Options.....	6
3.	Innovative Features	7
4.	What's New in GstarCAD 2022.....	8
4.1.	ACET Interfaces <i>New</i>	8
4.2.	FASTSEL <i>New</i>	10
4.3.	Single-document Mode <i>New</i>	11
4.4.	LAYULKALL <i>Innovative</i>	12
4.5.	CHANGEBASE <i>Innovation</i>	12
4.6.	LAYDRAWORDER <i>Innovation</i>	13
4.7.	DIMTOFFSET <i>Innovation</i>	15
4.8.	Dimension Features <i>Improvement</i>	16
4.8.1.	DIMREASSOCIATE	16
4.8.2.	DIMREGEN.....	18
4.8.3.	DIMCENTER	19
4.8.4.	Stretch Dimension Group.....	19
4.8.5.	DIMLAYER	20
4.9.	Multi-Line Trimming <i>Improvement</i>	21
4.10.	Group <i>Improvement</i>	21
4.10.1.	GROUPEDIT	22
4.11.	ANTIALIAS <i>Improvement</i>	23
4.12.	Plot <i>Improvement</i>	24
4.12.1.	PDF Plot Driver	25
4.12.2.	Plot with Transparency	27
4.12.3.	Raster Image Plot	31
4.12.4.	Hidden Shade Plot	33
4.13.	Raster Image <i>Improvement</i>	34
4.13.1.	Formats.....	34
4.13.2.	Display	35
4.13.3.	Information	36
	ACET Interfaces Supported in GstarCAD 2022	37



GstarCAD 2022 Complete Guide

Efficient design & Accurate plotting

In GstarCAD 2022, the plot functionalities are significantly improved, making plotting effects more precise and accurate. An upgraded raster engine has been integrated and enables more image formats, even 1 billion pixels images can be correctly attached, previewed, modified and plotted. Beyond, GstarCAD 2022 offers a plethora of other new and improved tools to help maximize your productivity.

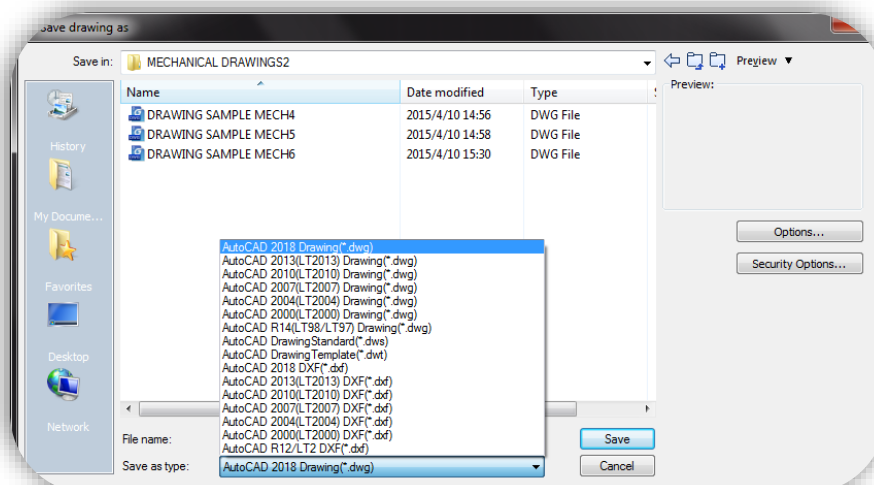
1. Perfect Compatibility

GstarCAD constantly improves its compatibility in all aspects and accomplishes the high compatibility with ACAD. The seamless data format, familiar interface, command structure and user operating habit, ease of use customization settings and applications/add-ons are all ready for you in GstarCAD 2022.

➤ Data Format

GstarCAD 2022 supports the native DWG/DXF file formats which are completely compatible with ACAD from version 2.5 to 2022. Any CAD drawings based on the DWG/DXF format can be easily handled by GstarCAD. Meanwhile, the drawing files created by GstarCAD also can be handled with other CAD software. GstarCAD 2022 fully realizes bidirectional compatibility with ACAD in data formats.

Furthermore, GstarCAD 2022 supports various kinds of data file formats and application development interfaces. You could create or edit drawings with exactly original ways.

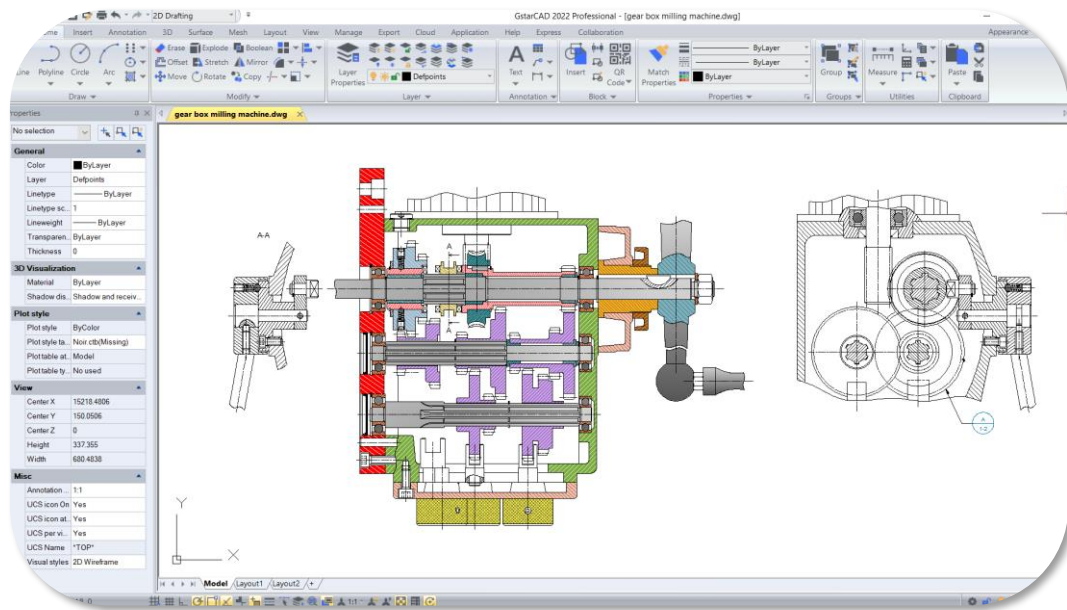


The mainly file formats and development interfaces between GstarCAD and ACAD.

Items	GstarCAD	ACAD
2.5-2018 DWG/DXF Versions	√	√
Drawing Template File (DWT)	√	√
Drawing standard File (DWS)	√	√
Customize User interface file (CUI/CUIX)	√	√
Old Menu File (MNU)	√	√
Drawing Sheetset File (DST)	√	√
Hatch Pattern File (PAT)	√	√
Font File (SHX)	√	√
Line Type File (LIN)	√	√
Print Style File (CTB/STB)	√	√
Import and Export WMF	√	√
Import and Export SAT	√	√
Import 3DS	√	√
Import DGN	√	√
Export DWF/DWFX	√	√
Export STL	√	√
Export EMF	√	√
DWF Underlay	√	√
PDF Underlay	√	√
DGN Underlay	√	√
Script File (SCR)	√	√
LISP Development Interface	√	√
LSP File Loading	√	√
FAS File Loading	√	√
VLX File Loading	√	√
VBA Development Interface	√	√
Class ARX Development Interface	√	√
.net Development Interface	√	√

➤ Concise User Interface

GstarCAD 2022 offers you a concise and familiar interface. The combination of attractive dark color theme and icon designs will reduce your eyes strain. It's also available for you to display and rearrange elements like the toolbars, display the command bar, switch between workspaces, change the interface themes, customize your own interface and enable the status bar. The toolbars and command bar can also be floated anywhere on the screen or docked as well.



➤ Familiar Command

You can get start with GstarCAD immediately with the familiar command structure and shortcut system that you have known without any extra training. Whether you're a novice user or an experienced CAD professional, you'll soon be creating drawings using the productivity-enhancing features of GstarCAD.

GstarCAD Commands	ACAD Commands	GstarCAD Commands	ACAD Commands
Multiple	Multiple	Superhatch	Superhatch
Osnap	Osnap	Redraw	Redraw
Qselect	Qselect	Regen	Regen
Qleader	Qleader	Scalelistedit	Scalelistedit
Spell	Spell	Bedit	Bedit
Layerp	Layerp	Render	Render
Layoff	Layoff	Flatshot	Flatshot
		

➤ Customized Settings

GstarCAD offers several methods to import your customized settings such as CUI, Lisp program, Shortcut settings, Blocks, DWT, Tool palettes, Plotters and so on from other CAD software. Just few minutes, you will find you are familiar with GstarCAD.

➤ API and Add-ons

GstarCAD offers friendly development interface such as GRX, .NET, VBA, Lisp etc. Nowadays, hundreds of professional applications and industrial solutions are running on GstarCAD.

For more information about applications/add-ons of GstarCAD, please refer to the link:

<https://www.gstarcad.net/application/>

2. Flexible Licensing

2.1. Licensing Policy

GstarCAD licensing policy is flexible and simple. We provide both perpetual license and subscription. You are free to choose the license mode and you decide when to upgrade.

- **Perpetual License**

When you choose to buy GstarCAD Perpetual License, you have the right to use it perpetually. You buy it once and it's forever yours. You are not forced to buy the subscription nor upgrades.

- **Perpetual License and Subscription Plans**

You can buy GstarCAD Perpetual License together with Subscription Plans. Gstarsoft releases a new GstarCAD major version every year, with Subscription Plans you can upgrade to the latest version of GstarCAD.

- **Yearly Subscription**

GstarCAD Yearly Subscription is similar as ACAD Subscription; you can just pay a smaller amount for using GstarCAD 1-year-license.

- **GstarCAD Upgrades**

Gstarsoft releases a new GstarCAD major version every year; you can upgrade your GstarCAD Perpetual License to any newer version, still the Perpetual License!

2.2. Licensing Options

GstarCAD not only provides the flexible licensing policy, but also provides the flexible licensing Options. GstarCAD offers Stand-alone and Network licenses, both are available with Soft key (Serial number) and Dongle (USB-key).

- **Stand-alone license**

The software is constrained to a certain host. A license is needed for each computer on which the software will be installed.

- **Network license**

A pool of licenses is available on the server, for use in any computer on the network. You only need to have licenses for the maximum number of simultaneous users expected, not for each computer where the software will be installed.

	Stand-alone		Network	
	License-key Serial number	USB-key Dongle	License-key Serial number	USB-key Dongle
Perpetual license	✓	✓	✓	✓
Rental license	✓	×	✓	×
License borrowing	×	×	✓	×
Connection to license server	×	×	✓	✓

3. Innovative Features

GstarCAD offers over 100 unique and innovation tools like “Collaboration”, “Area Table”, “Auto Layer”, “Viewport to Layout”, “AutoxIstable”. They are adopted to significantly speed up your drafting speed.

GstarCAD Innovative Features	Description
Autolayer	Automatically switch the current layer while drawing the graph and draws the graphic to the set layer.
Area Table	Automatically dimension and count the area of an enclosed object and export the result to a table in the current drawing area.
Break Object	Bleaks Objects by intersecting lines and allows to set the gap.
Block Break	Breaks or shelter the graphic under the block.
Graphic Compare	Compares graphic of two groups of objects or two files.
Line2pl	Converts one or multiple connected straight line(s), arc(s) to one polyline.
Sptpl	Spline created can be converted to a polyline according to the accuracy (number of segments of the arc).
GstarCAD Tools	A set of GstarCAD practical tools to enhance design efficiency, Including Drawing Scale, Rotate Cursor, Draw Axonometric Line, Extension, Normal Connect, etc.
Drawing Lock	Turns the drawing into a whole block to prevent be modified by others.
Attribute Increment	Specifies attribute of blocks with incremental value, and to modify attribute value of blocks according to the sort method.
Define Layout Viewport from ModelSpace (M2LVPORT)	Defines the range of drawing displayed in viewport from the model space, calculate the viewport size based on the set scale and position the viewport in the layout space.
Align Tool	Aligns selected objects such as: rectangle, circle, line, spline, arc, pline, block and even 3D model object along X or Y axis coordinates.

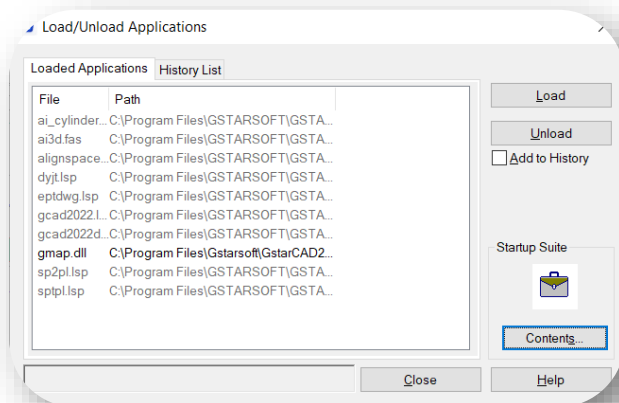
Arrange Tool	Adjusts the arrangement of multiple objects. It can align multiple objects at left, right, top, bottom and center and also can arrange vertical or laterally.
MEASUREGEOM	Supports to measure distance, radius, angle, area, volume sum area and so on.
Symmetric Draw	Generates the symmetrical object automatically when drawing an object.
Outline Objects	Extracts the outline shape of selected closed objects in a window selection method.
Invert Fillet	The FILLET command now offers a new option called Invert. You can create a reverse fillet by this option.
Magnifier	Views a specific area of your drawing as a magnifier with the capability of snap points without performing zoom in/out.
Barcode & QR Code	Creates Barcode& QR Code by entering data or picking data from drawing.
Shortcut Customization(CUSTACC)	CUSTACC command allows you to customize, delete or modify existing command shortcuts.
Table Tools	A set of practical tools to draw and edit tables and can export CAD Table to Excel file.
AutoXLSTable	Opens Excel file to edit the data and insert it to GstarCAD. It also allows updating the table data after the drawing was modified.
Pline Boolean	Supports different Boolean operation options such as union, intersection and subtraction.
Batch Print	Batch print drawings with the same drawing frame attribute in a drawing.
Arrange Frame	Inserts frames of drawings, calculate according to the size of the frame and then arrange them to a big drawing.
GstarCAD Collaboration	Helps to improve project design efficiency and significantly reduce error and cost.
...	...

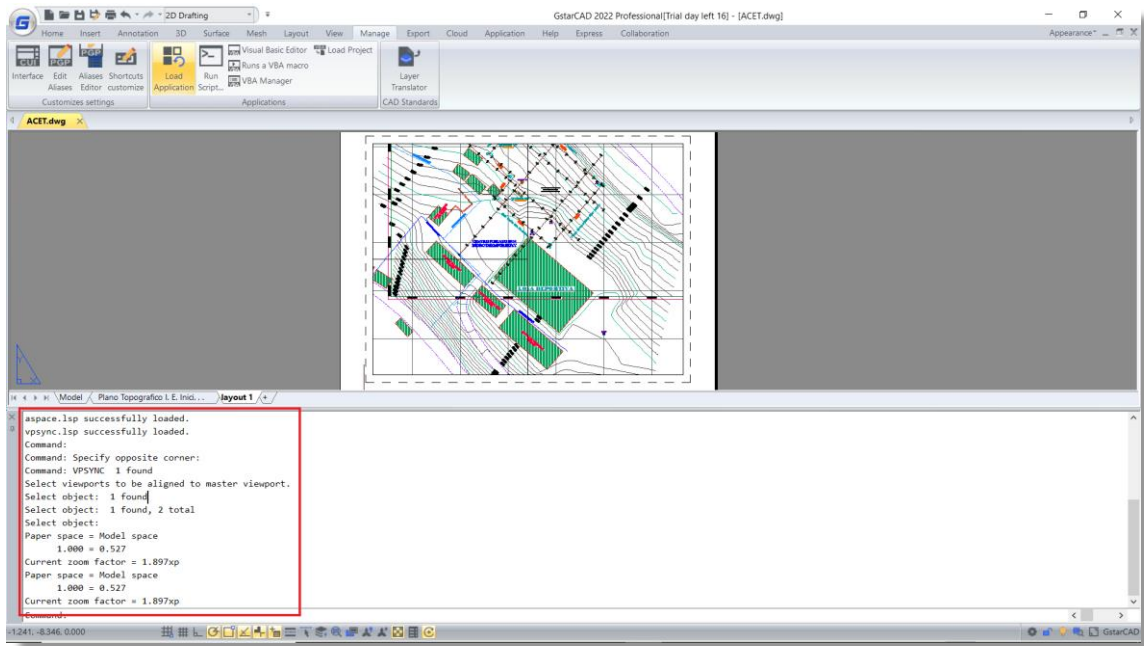
4. What's New in GstarCAD 2022

4.1. ACET Interfaces *New*

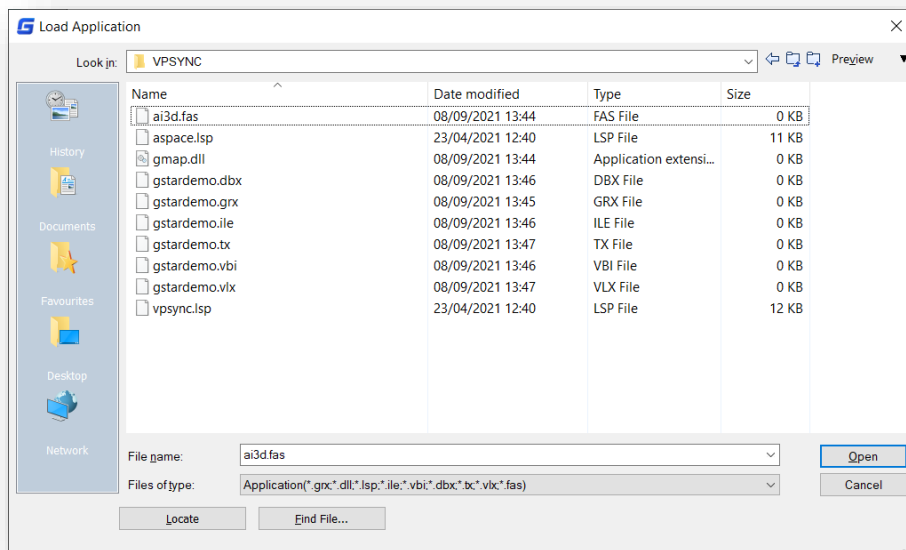
You can click Ribbon → Manage → Applications → Load Application or input APPLOAD command to load AutoCAD Express Tools and 'Plug-in' functionalities developed with supported ACET interfaces in GstarCAD 2022.

Then you are able to execute the loaded application in GstarCAD 2022 successfully.





Supported extensions include: .lsp* .dll* .fas* .grx* .ile* .vbi* .dbx* .tx* .vlx*



Supported ACET interfaces: 351 ACET (AutoCAD Express Tools) interfaces are supported in GstarCAD 2022.

Note:

- The name list of supported ACET interfaces is attached to the end of Complete Features Guide document.

4.2. FASTSEL *New*

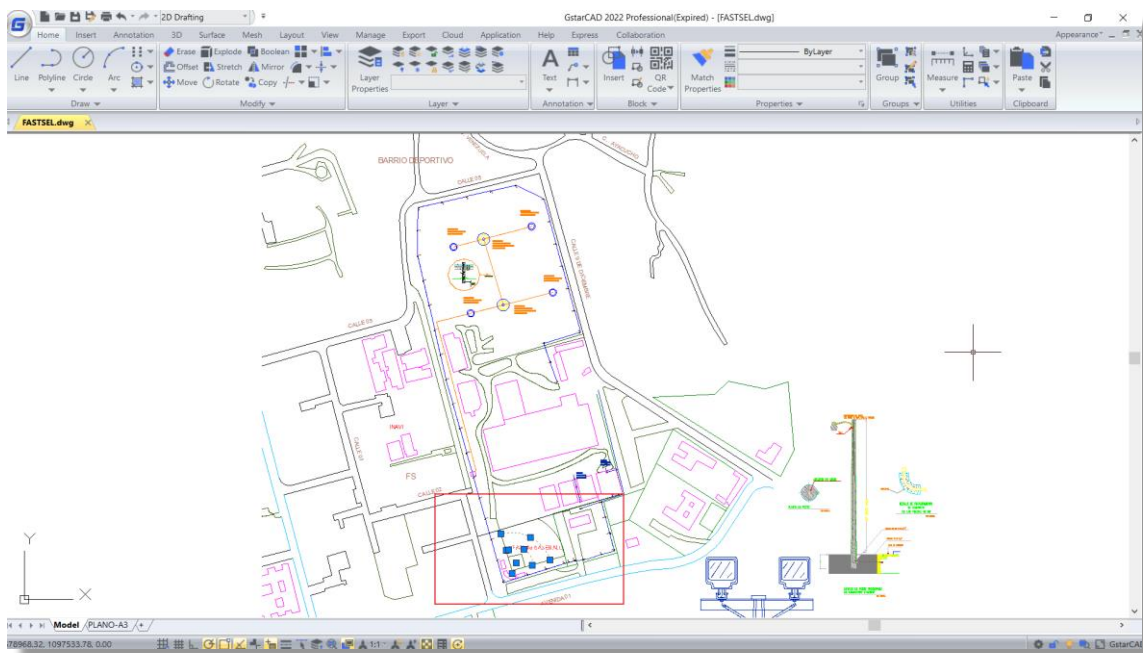
You can input FASTSEL command to select all objects that touch the selected object immediately.



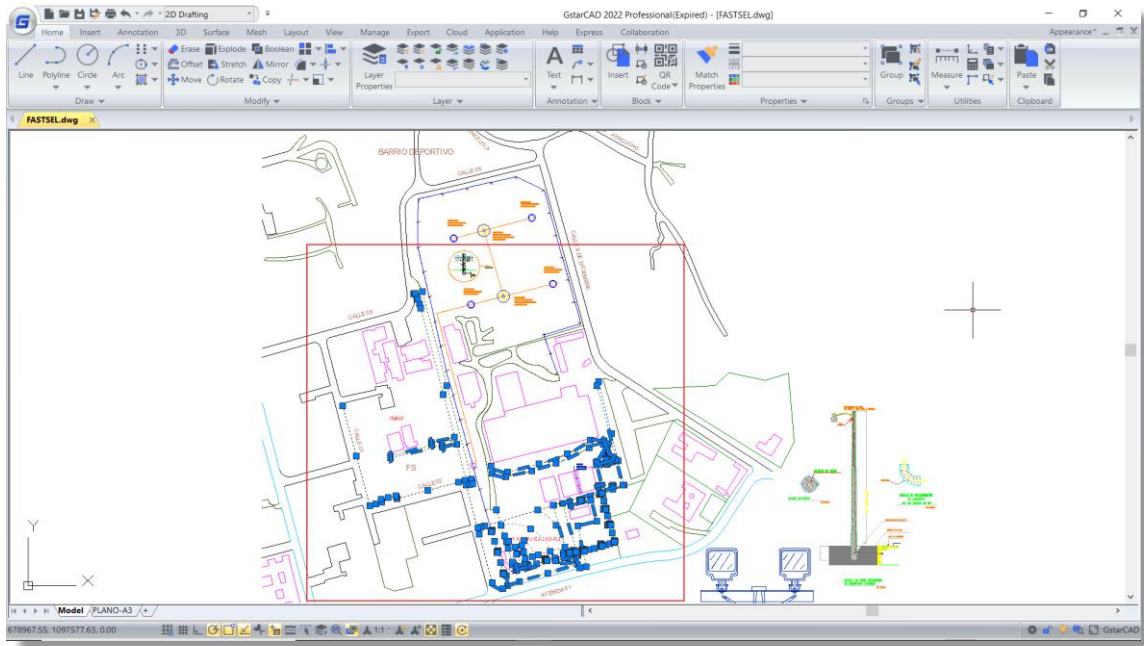
Supported objects include: Lines, polylines, circles, arcs, attribute definitions, text, Mtext, ellipses, and images.

FSMODE: Controls two behaviors of FASTSEL command, default value is OFF.

- If FSMODE is turned OFF, when you execute the FASTSEL command, it selects only those objects that are touching the selected object.

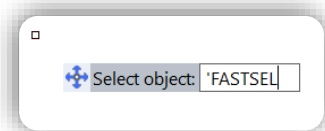


- If FSMODE is turned ON, when you execute the FASTSEL command, it selects all the objects that are touching the selected object, as well as any objects that are touching those objects. The selection process of all unselected touching objects continues until there are no more unselected objects visible in the drawing area.



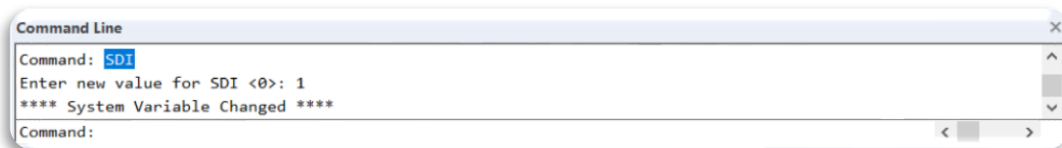
Note:

- You can execute FASTSEL command transparently by inputting 'FASTSEL' in many commands at the Select Objects prompt.



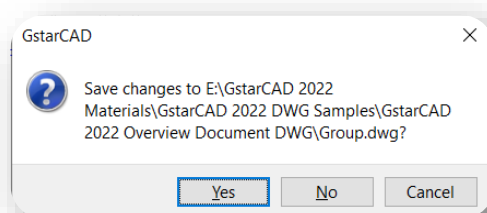
4.3. Single-document Mode *New*

In GstarCAD 2022, you can input SDI and reset its value to 1 to enable single-document mode.



SDI: System variable, sets Single Document Interface or Multiple Document Interface.

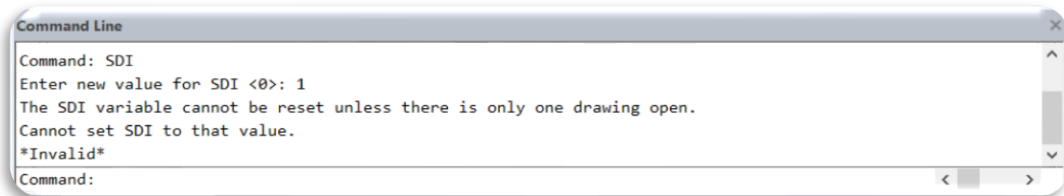
- If SDI is set to 1, Single-document mode is enabled, in which you are not allowed to open multiple drawings within the same GstarCAD session, only one drawing is allowed to be open at a time. And you will be prompted to save the current drawing, prior to opening or creating any other drawing.



- If SDI is set to 0, Multiple-document mode is enabled, you are able to open multiple drawings within the same AutoCAD session.

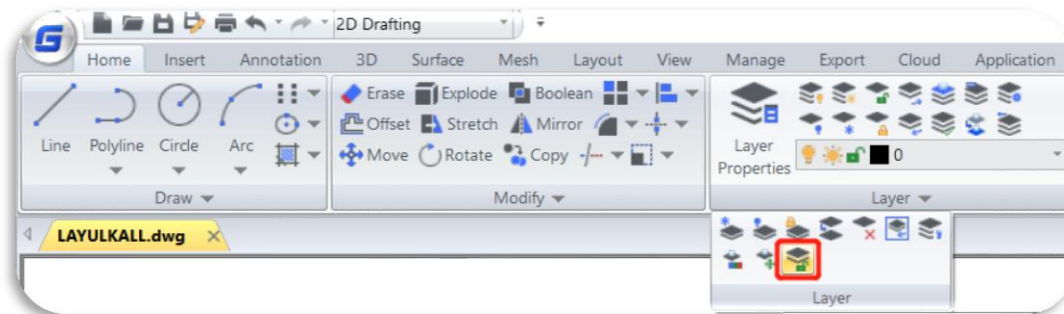
Note:

- The SDI variable cannot be reset to 1 when multiple documents are already opened in the software.



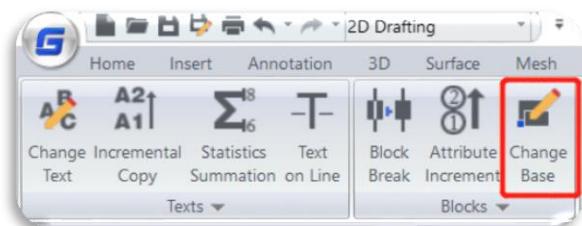
4.4. LAYULKALL *Innovative*

If you have a lot of layers locked and need to unlock them all in you drawing, you can input LAYULKALL command or click Ribbon →Home → Layer drop down list → LAYULKALL to unlock all the locked layers immediately in GstarCAD 2022.

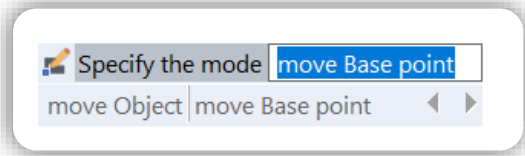


4.5. CHANGEBASE *Innovation*

You can input CHANGEBASE command or click Ribbon → Express → Blocks → Change Base to modify the base point position of a block.



After selecting a block and specifying new position of the basepoint, you will get 2 options (move Object, move Base point) in the command line and dynamic input box.



- Type **“Object”** to move objects in the block according to the new relative position of objects and base point, while the base point is staying in original position.
- Type **“Base point”** to move the base point, while the objects are staying in original position.

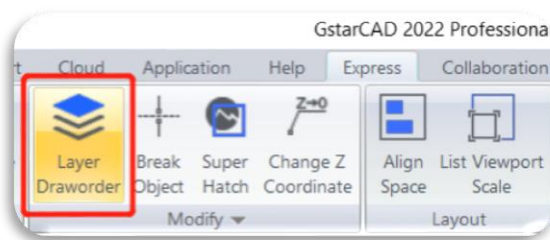
Note:

The CHANGEBASE command does not apply to the dynamic block, you can double click the dynamic block and modify it in Block Editor.

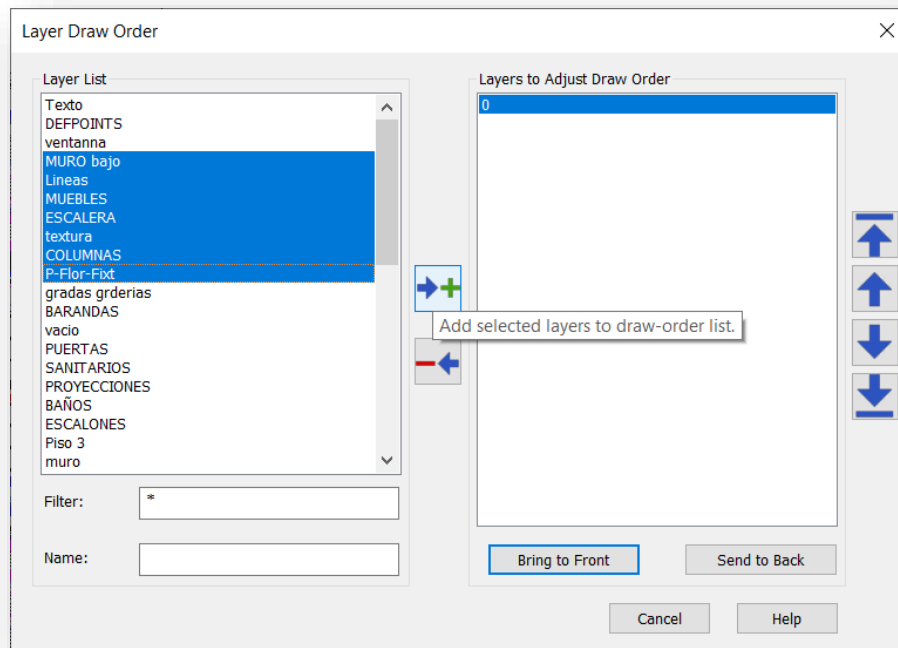



4.6. LAYDRAWORDER *Innovation*






You can input LAYDRAWORDER command or click Ribbon → Express → Modify → Layer Draworder to rearrange layers according to layer name, which allows you to adjust the drawing order of all objects on a layer more easily and flexibly.



You are able to select one or more layers, and bring them to front or send them to back in Layer Draw Order dialog box:



- **Layer List:** Display the layers that can be added to the 'Layers to Adjust Draw Order' list.
- **Layers to Adjust Draw Order:** Layers that are selected to adjust draw order.
- **Filter:** Set filter for ease of layer selection. If there are too many layers in the Layer List box, you can filter the layer list by entering the wildcard * and characters to facilitate the selection and addition of layers.
- **Name:** Type a name of layer and press enter, it will be added to the right-hand list.
- **Bring to Front:** Bring selected layers above the other layers.
 - All layers selected to the 'Layer to Adjust Draw Order' list will be brought above the other layers.
 - The order of objects on those selected layers will be arranged according to their order listed in the 'Layer to Adjust Draw Order' list.
- **Send to Back:** Send selected layers below the other layers.
 - All layers selected to the 'Layer to Adjust Draw Order' list will be sent below the other layers.
 - The order of objects on those selected layers will be arranged according to their order listed in the 'Layer to Adjust Draw Order' list.
- **Button** : Add selected layers to the Draw-order List.

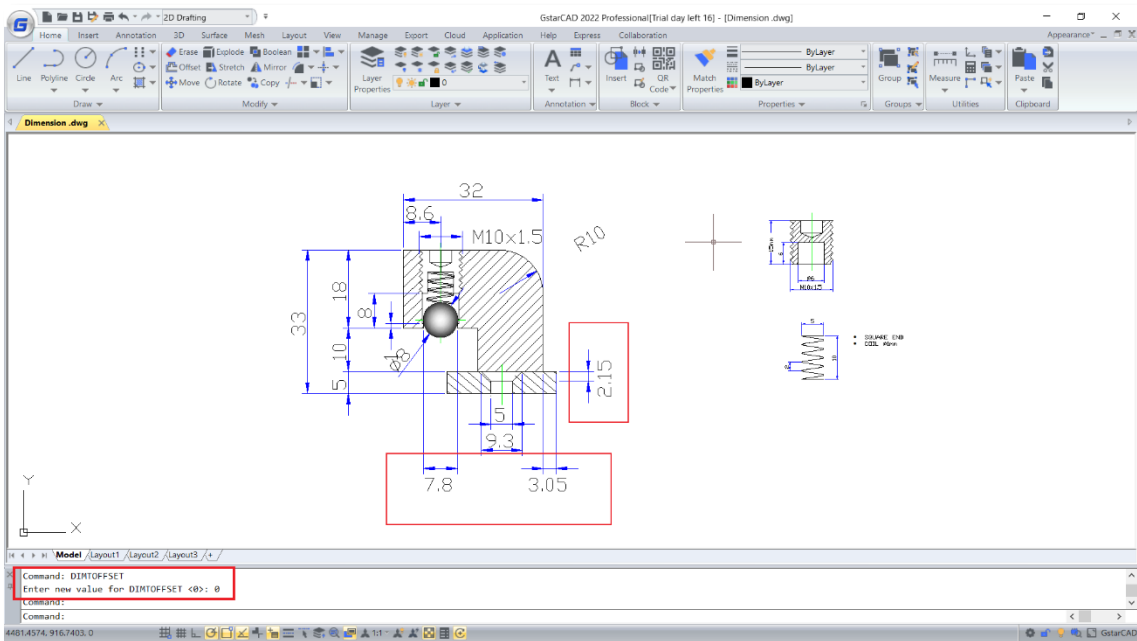
- Button : Remove selected layers from the Draw-order List.
- Button : Move selected layers to the top of the Draw-order List.
- Button : Move selected layer up a place in the Draw-order List.
- Button : Move selected layer down a place in the Draw-order List.
- Button : Move selected layers to the bottom of the Draw-order List.

4.7. DIMTOFFSET *Innovation*

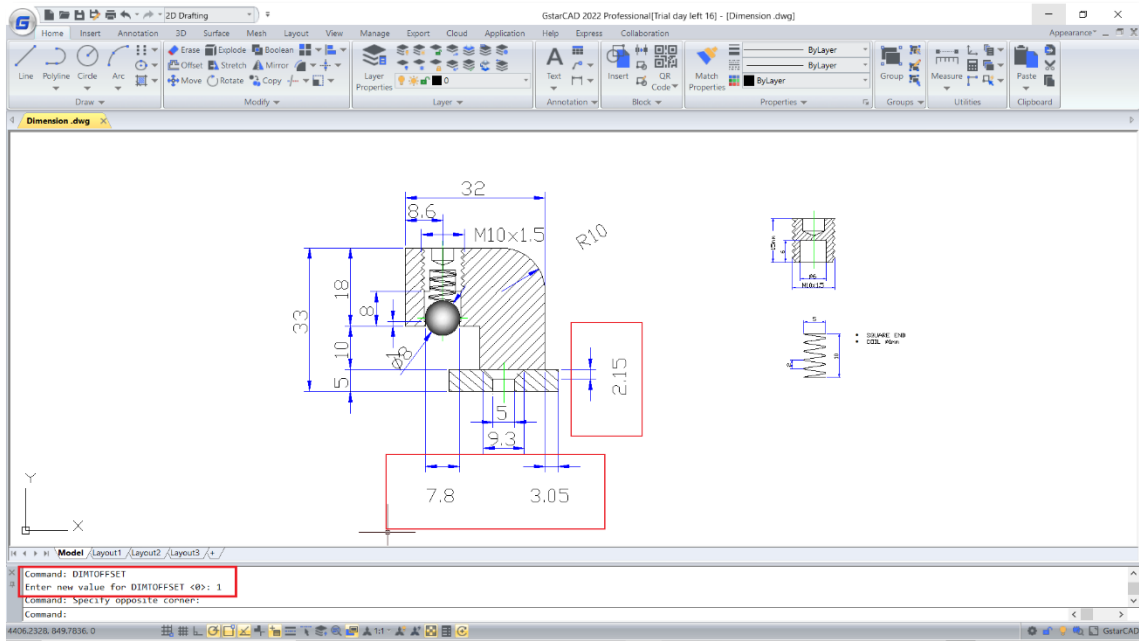
In GstarCAD 2022, if the space above the arrows is not enough for dimension text when you place the dimension below or at the right side of the objects, the text will be placed downward. In this case, you can use two values of the system variable DIMTOFFSET to set two kinds of gap styles between the arrows and text, one is the same as AutoCAD, another reduces the gap.

DIMTOFFSET: System variable, controls gap style between the arrows and text.

- If DIMTOFFSET is set to 0, the gap is reduced. And you can use DIMREGEN command to regenerate dimensions which are created when DIMTOFFSET is 1.



- If DIMOFFSET is set to 1 (default), the gap is the same as AutoCAD.



Note:

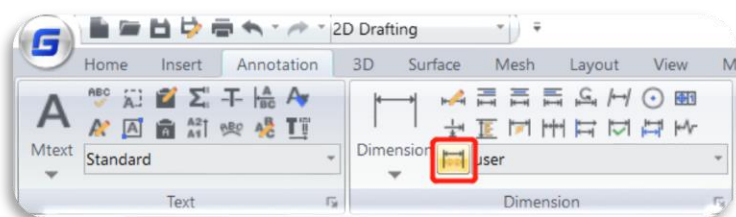
- If you open a drawing in AutoCAD, in which the dimensions were created with DIMOFFSET value being 0, once you move, copy or edit these dimensions, it will change back to the display of DIMOFFSET value being 1.

4.8. Dimension Features Improvement

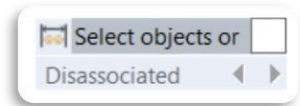
In GstarCAD 2022, commands DIMREASSOCIATE, DIMREGEN, DIMCENTER, Stretch Dimension Group and a system variable DIMLAYER are supported to make dimension display more reasonable and accurate, and make it easier and faster to modify dimensions.

4.8.1. DIMREASSOCIATE

You can input DIMREASSOCIATE command or click Ribbon → Annotation → Dimension → Reassociate Dimensions to associate or reassociate selected dimensions to objects or points on objects.



After enabling the DIMREASSOCIATE command, you will be prompted to choose associating particular dimension objects or associating all disassociated objects in the drawing one by one.

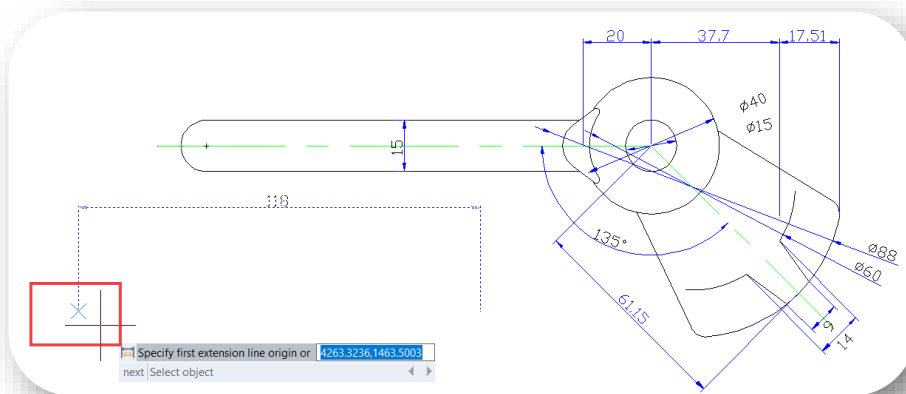


If you select Disassociate option,

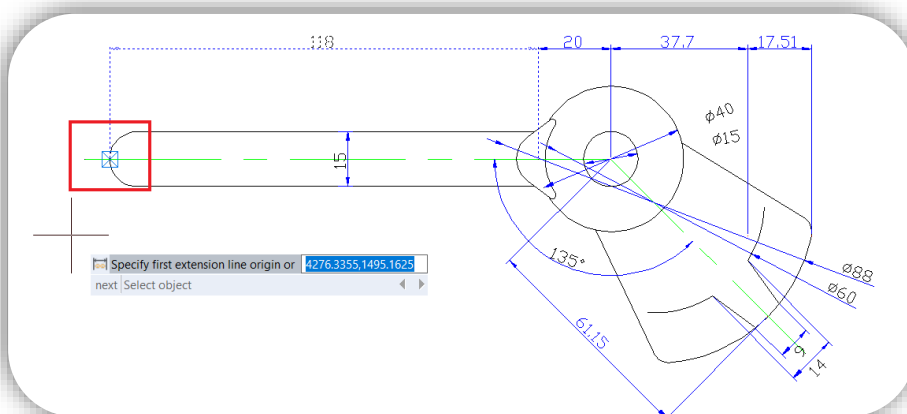
All of dimensions that have any disassociated defining point with geometries in the drawing will be selected to associate or reassociate one by one. You can press 'Esc' to stop the command, but associations you have made will be kept.

If you select any dimension objects

- When the defining point of selected dimension object doesn't associate with the geometry, the X mark is displayed.



- When the defining point of the selected dimension object associates with the geometry, the ☒ mark is displayed.

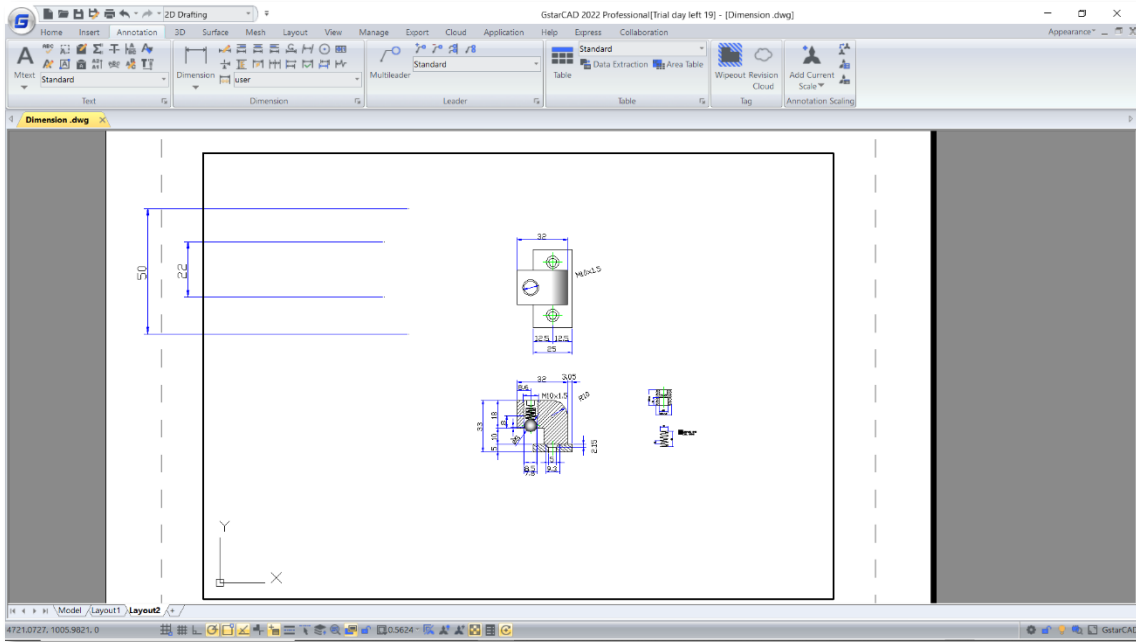


- If you press **Enter** or select '**Next**' option, you are able to skip to the next extension-line origin point.
- If you select '**Select object**' option, you are able to select a geometric object to associate with the dimension.

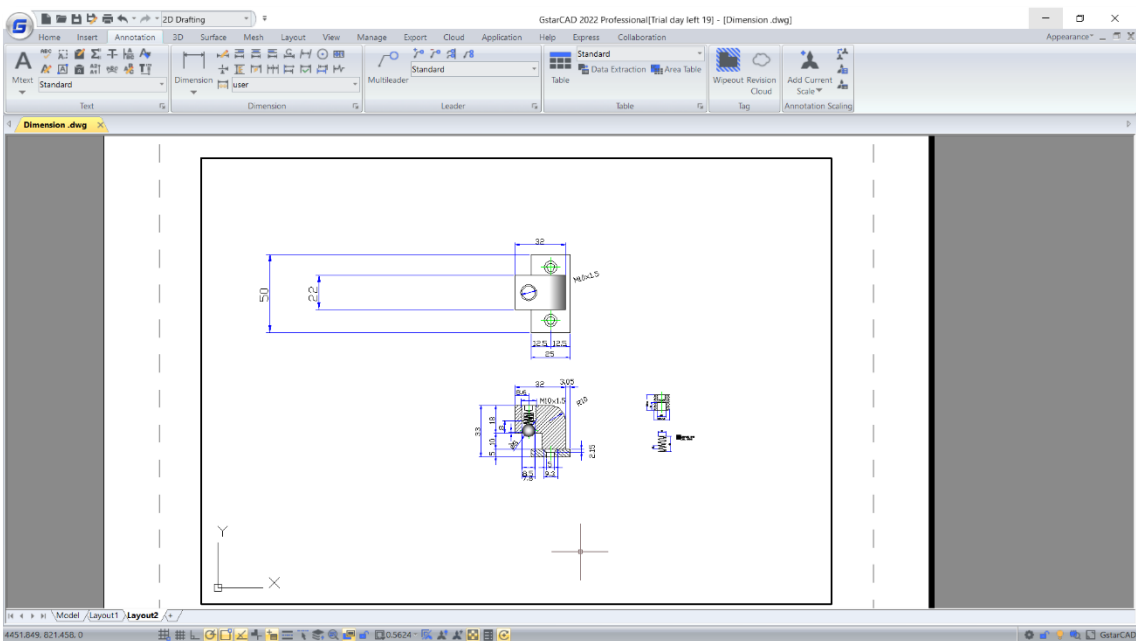
- If you press 'Esc', you will stop the command, but associations you have made will be kept.

4.8.2. DIMREGEN

You can input DIMREGEN command to update the positions of all associative dimensions in Model space or Layouts. The command not only allows moving associative dimensions to correct positions, but also regenerating dimensions display according to current system variables value.

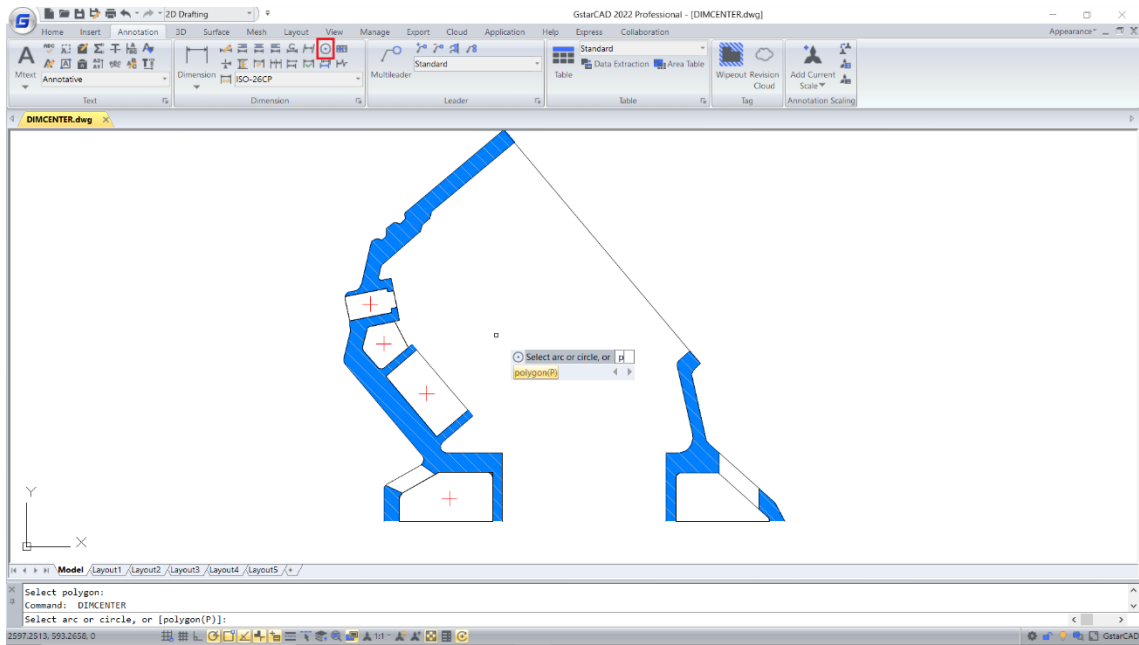


After typing 'DIMREGEN' in dynamic input box or command line:



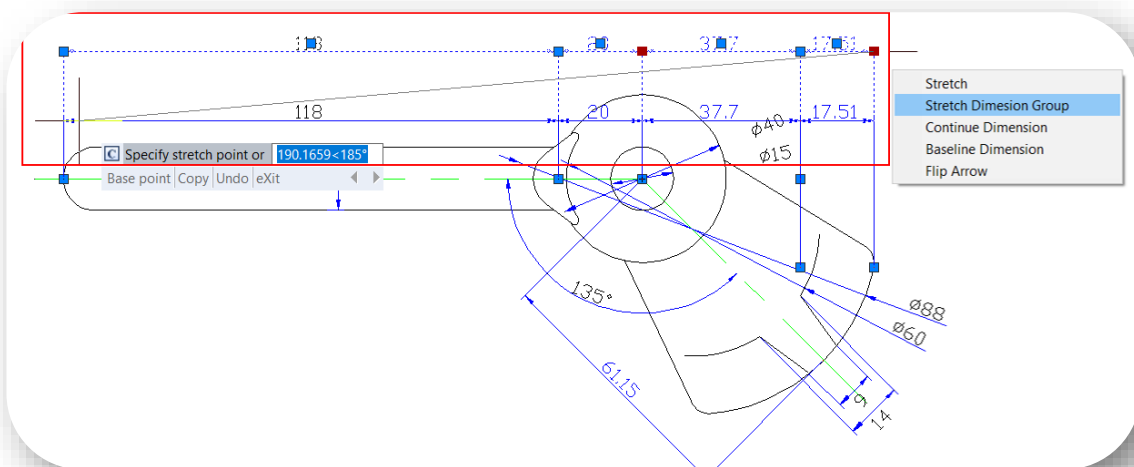
4.8.3. DIMCENTER

You can input DIMCENTER command or click Ribbon → Annotation → Center Mark and select Polygon option to mark center of polygons easily.



4.8.4. Stretch Dimension Group

In GstarCAD 2022, if you need to stretch dimensions that share grips with each other together, you can hover the cursor on any of their grips and select 'Stretch dimension group' option in the dynamic grip menu and stretch them all.

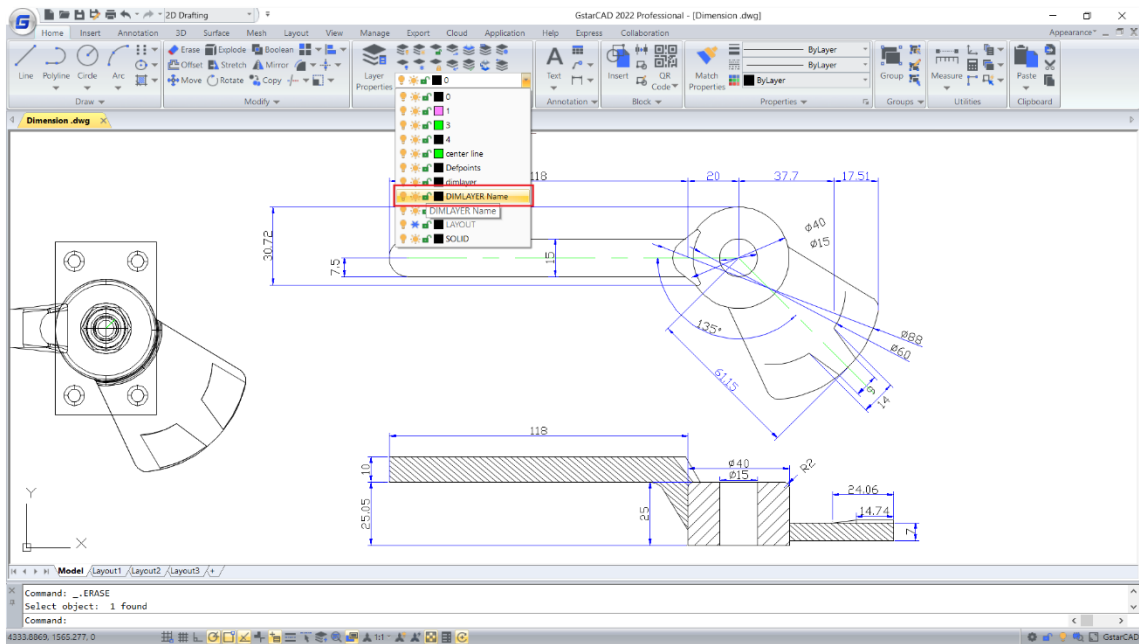
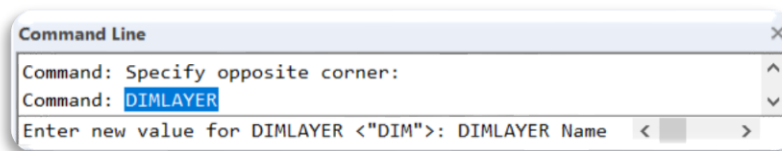


After selecting 'Stretch Dimension Group' option, you will get 4 options:

- If you type 'Base point', you are able to move the dimensions according to the base point and second point you choose.
- If you type 'Copy', you are able to copy a new group of dimensions and move them together, the original dimension group won't be deleted.
- If you type 'Undo', you are able to cancel the previous step.
- If you type 'eXit', you are able to stop the command.

4.8.5. DIMLAYER (system variable)

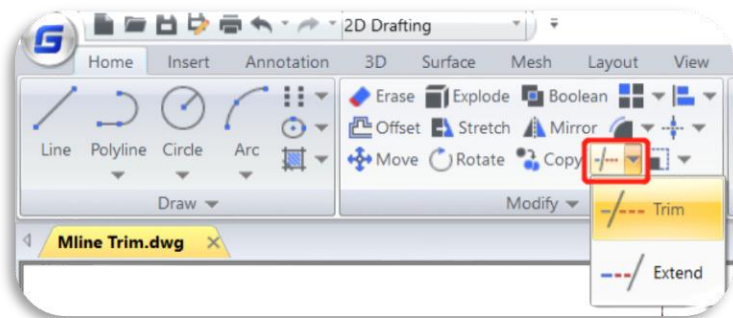
You can input DIMLAYER in command line or dynamic input box to specify a default layer for dimensions, new dimensions will be created on that layer automatically instead of creating dimensions on current layer.



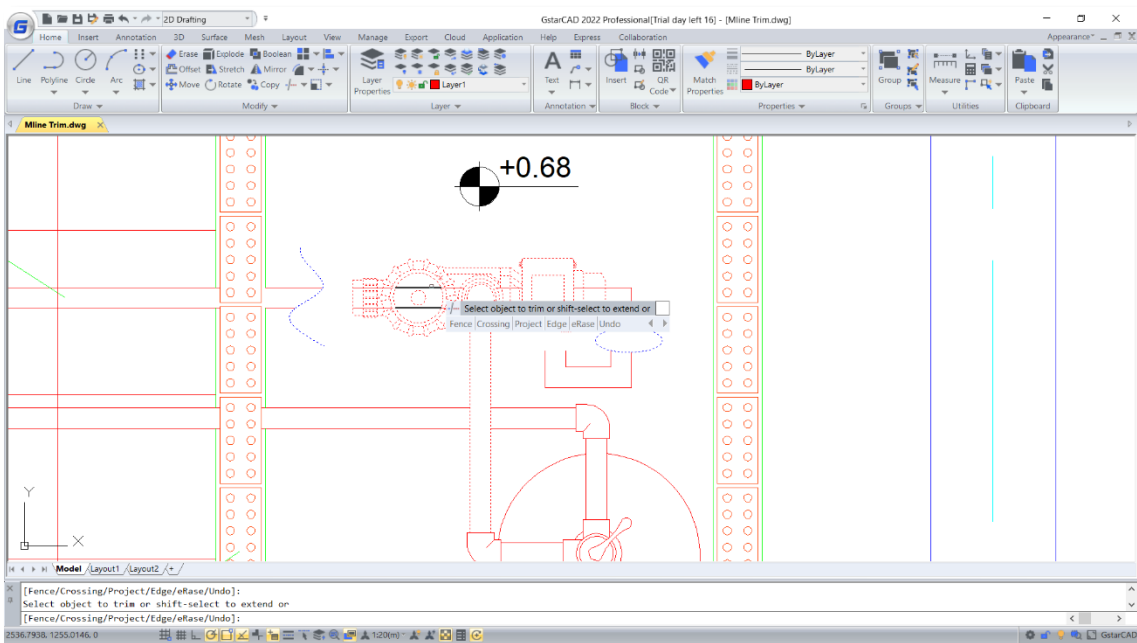
4.9. Multi-Line Trimming *Improvement*

You can input TRIM command or click Ribbon → Home → Trim/Extend to trim or extend Multi-Line objects easily.

After selecting the boundaries, you are able to move the cursor on the Multi-Line and preview which part will be trimmed or extended.



Eligible boundary objects include: Lines, polylines, circles, arcs, ellipses, splines, etc.

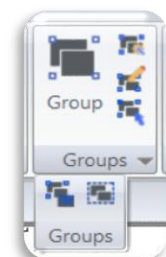


Note:

All the options of TRIM command are available for Multi-Line Trimming, including Fence, Crossing, Project, Edge, eRase, and Undo.

4.10. Group *Improvement*

In GstarCAD 2022, most group commands are organized into a Groups Panel in the ribbon, making it more convenient to create group, edit group, ungroup and control group display by clicking icons in the ribbon directly.

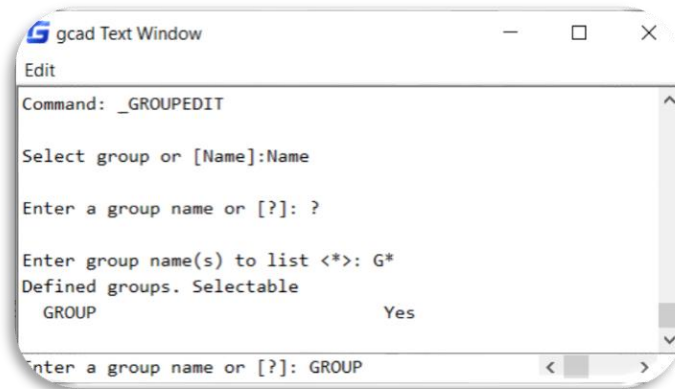
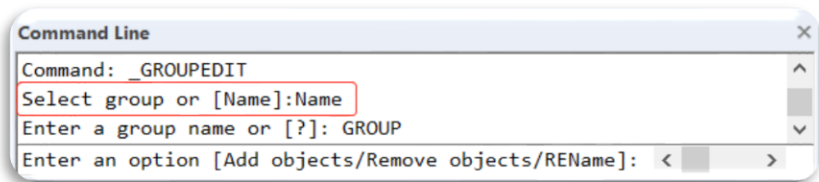


4.10.1. GROUPEDIT

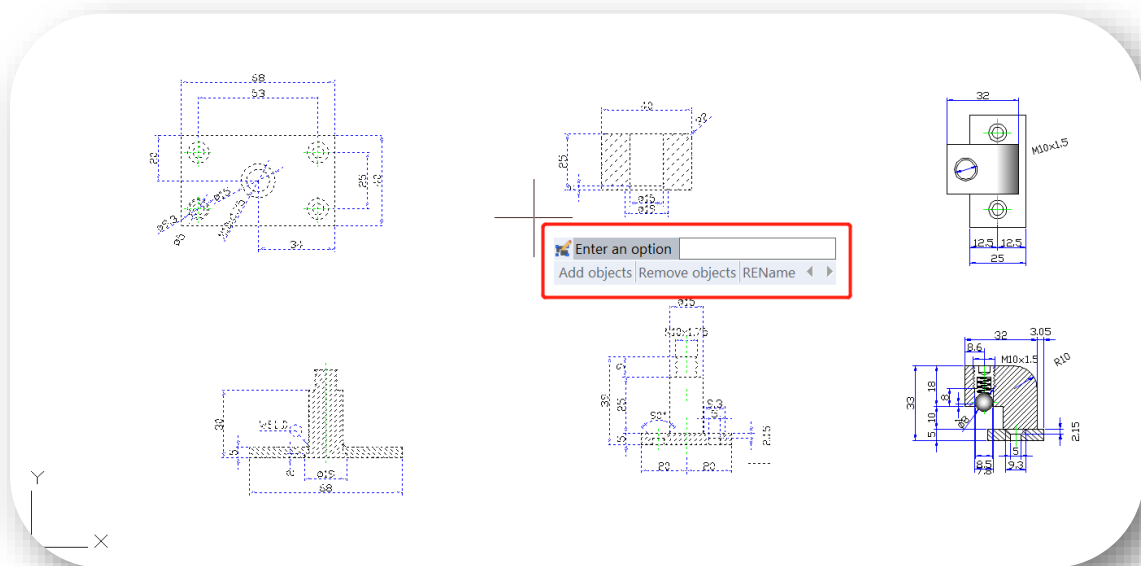
You can input GROUPEDIT command or click Ribbon → Home → Group → Group Edit to add, remove objects from the selected group, as well as rename the selected group.

After enabling the GROUPEDIT command, you can click any object of a group in the drawing to select that group, or you can select 'Name' option,

- **Name:** Select a group by entering its name.
- **?:** If you only know the first letter or the last letter of group name, you can select this option and enter the letter you know, and it will ask you to complete the group name.



After selecting a group, you will get 3 options:



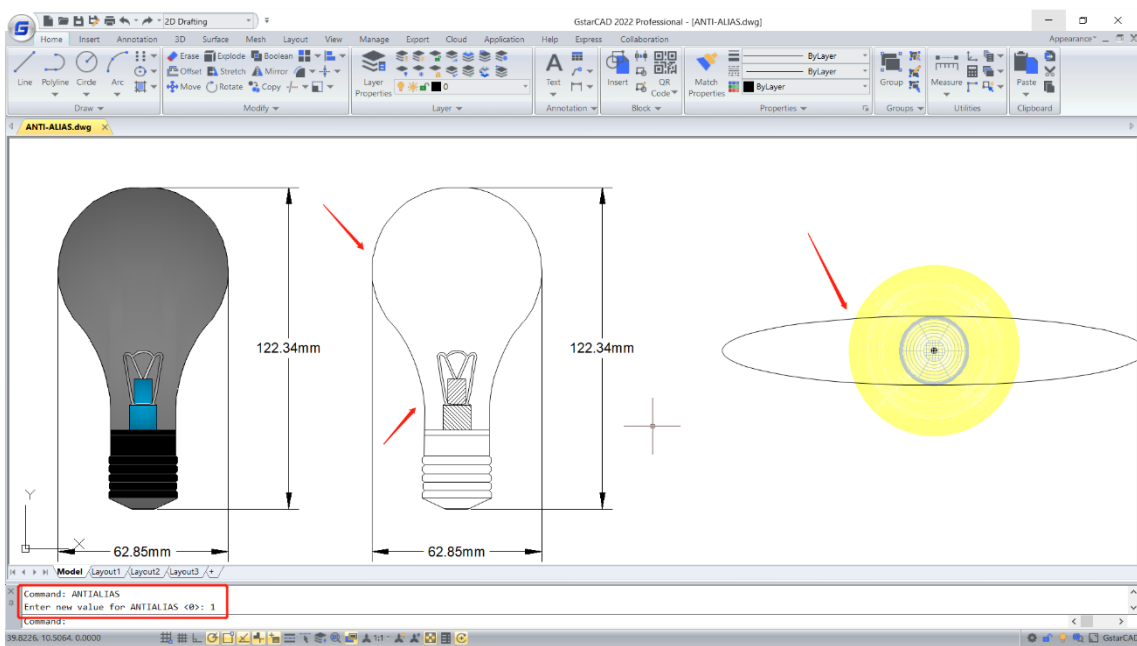
- Type 'Add objects' to add objects to the selected group.
- Type 'Remove objects' to select and remove objects from selected group.
- If you select 'REName' option, you are able to change the name of selected group.

4.11. ANTIALIAS *Improvement*

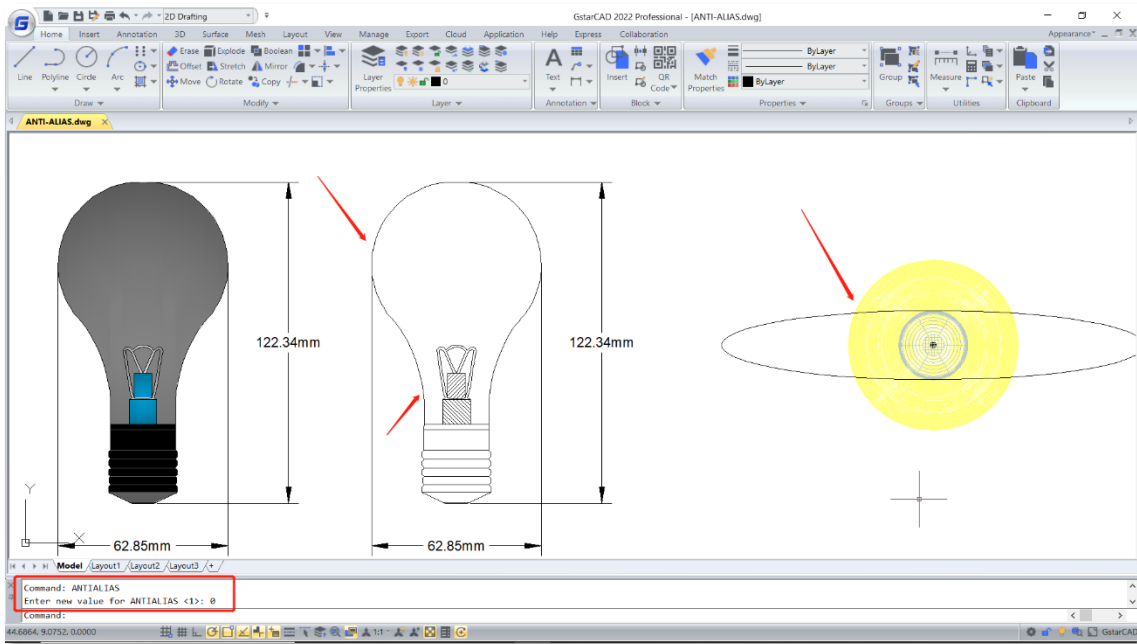
Sometimes, the lines and curved lines in the drawing are not displayed very smoothly, there may be a little bit jagged. At this time, you can use the anti-aliasing system variable ANTIALIAS to adjust the display of lines and curved lines.

ANTIALIAS: System variable, control the display quality of jagged 2D objects.

- When the value is set to 1, edges of lines and curved lines are displayed more smoothly.

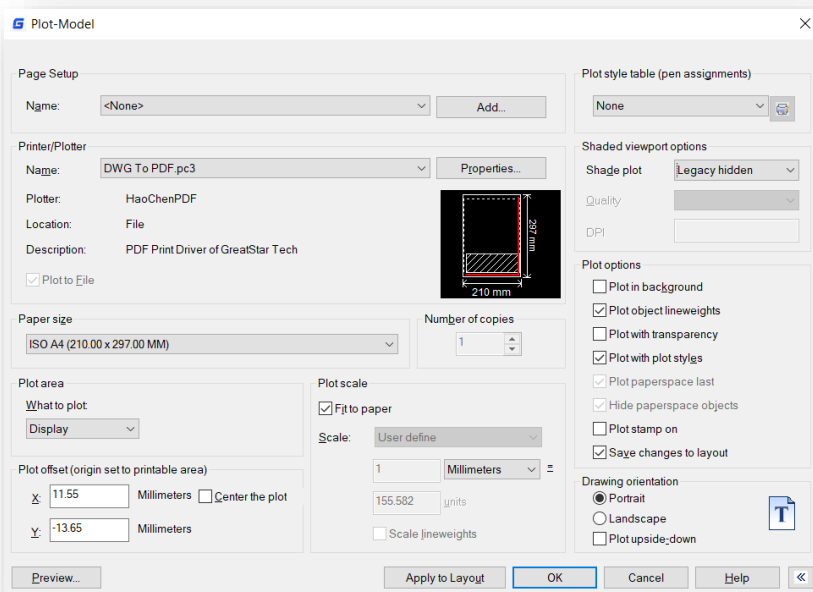


- When the value is set to 0, edges of lines, especially curved lines become less smooth and is jagged.



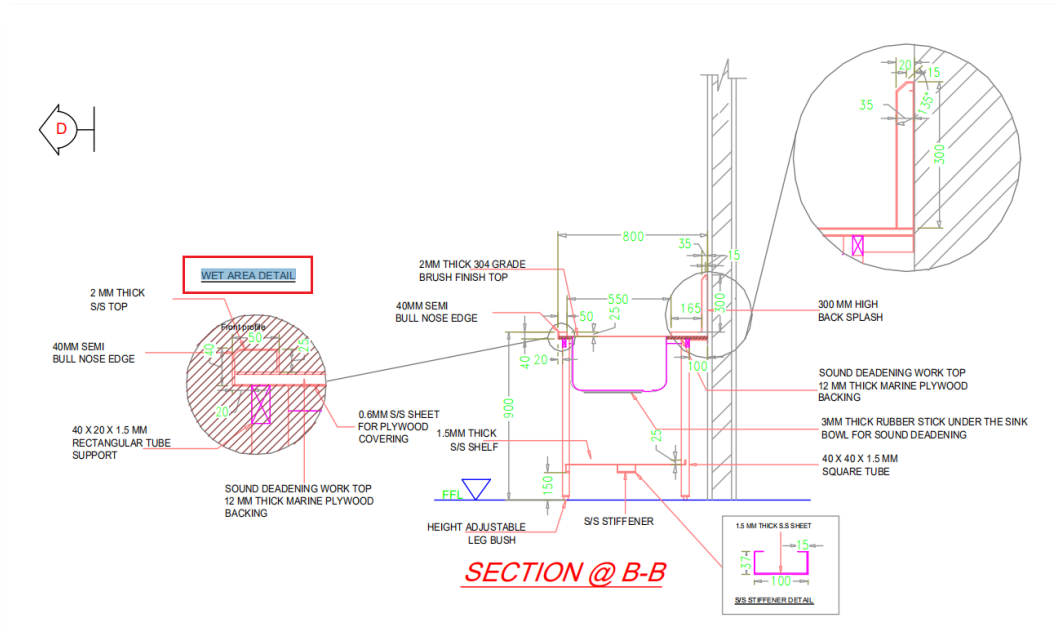
4.12. Plot *Improvement*

In GstarCAD 2022, PDF plot driver, plot with transparency function, raster images plotting and hidden shade plot function are significantly improved. The plotting effects now are more precise and accurate, and many plotting issues in the old version are completely solved.

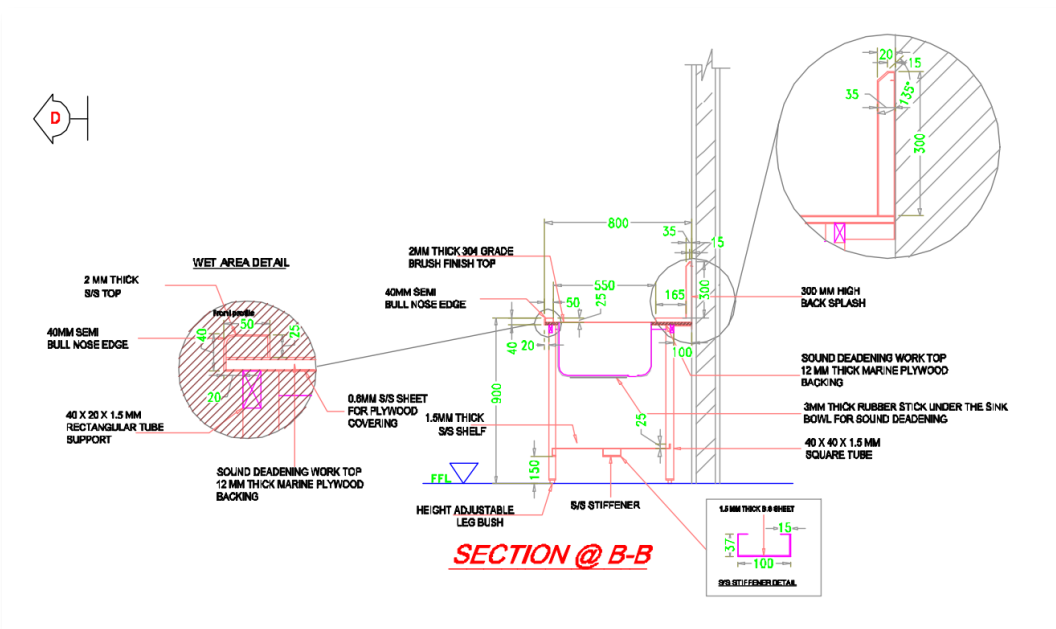


4.12.1. PDF Plot Driver

- When you plot with any options in GstarCAD 2022, the TTF (Truetype fonts) text is output as searchable and editable text with smooth border display, no matter how you set the value of text width factor and oblique angle.

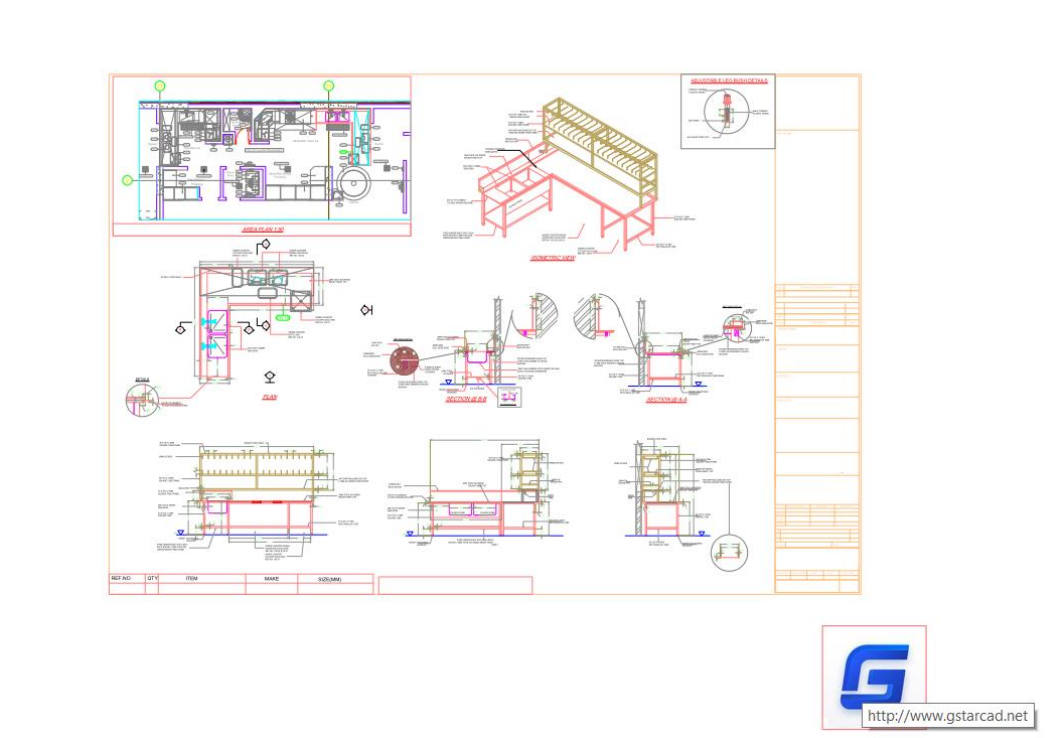


Plotted from GstarCAD 2022

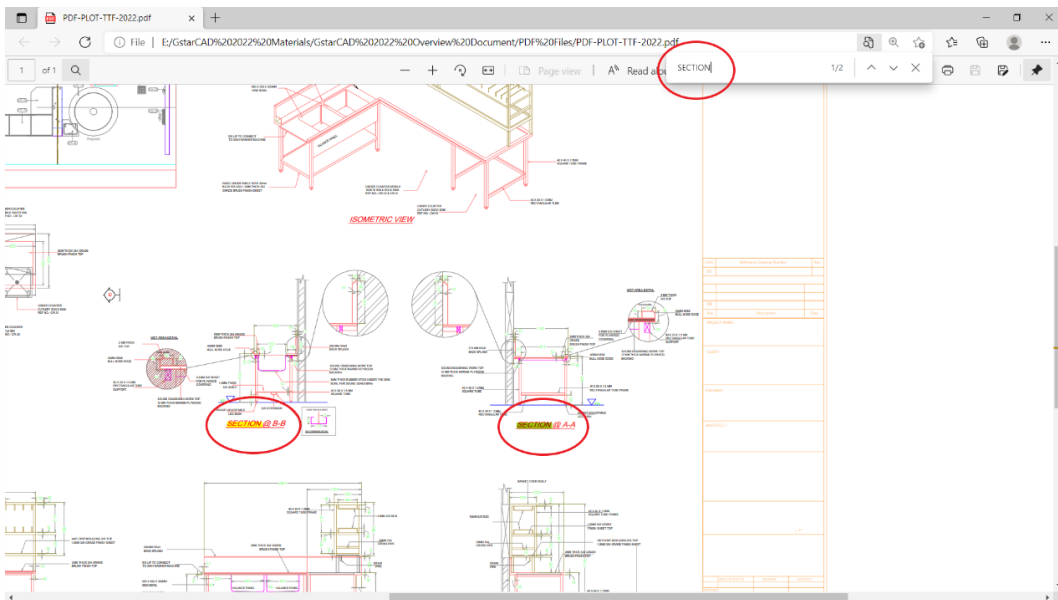


Plotted from GstarCAD 2021

- Hyperlinks are retained and remain clickable when plotted to PDF.



- Third-party tools can easily read all information of the PDF plotted from GstarCAD 2022, and you are able to search, copy text and add electronic signatures, etc.



4.12.2. Plot with Transparency

- The display after plotting with transparency is much clearer and more accurate, the arcs, circles, ellipses, graphics and text boundaries are smoother. And the drawing information after plotting will not be modified, all kinds of objects can be plotted correctly.

Plot with transparency



Plotted from GstarCAD 2022 and scaled up 700%



Plotted from GstarCAD 2021 and scaled up 700%

- The raster images are able to be plotted with transparency perfectly in GstarCAD 2022.

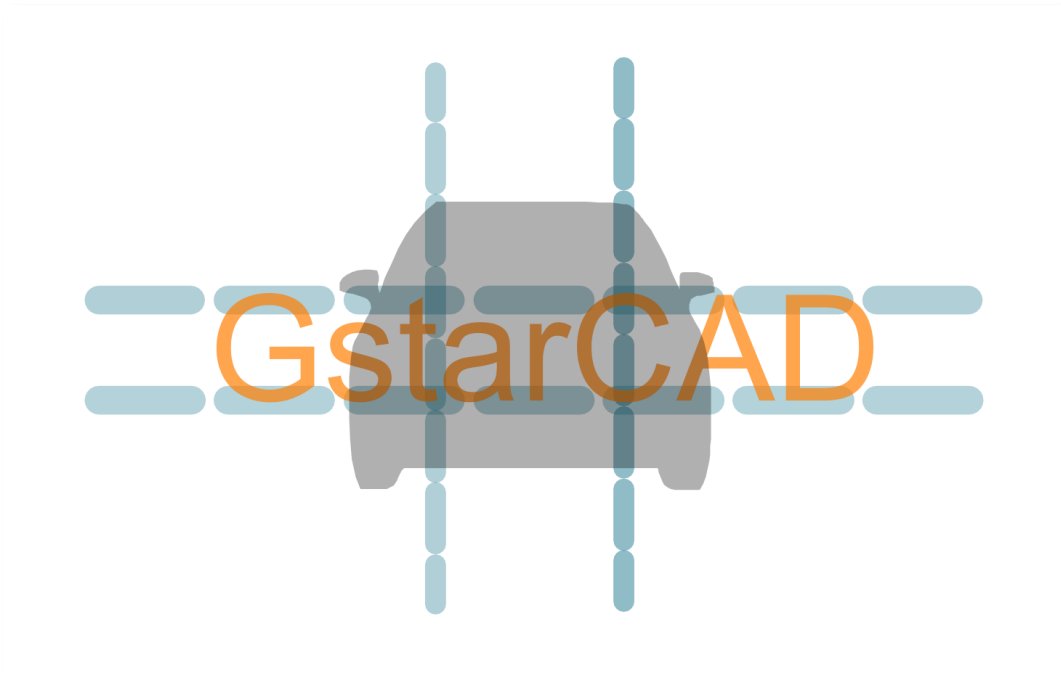


Plotted from GstarCAD 2022

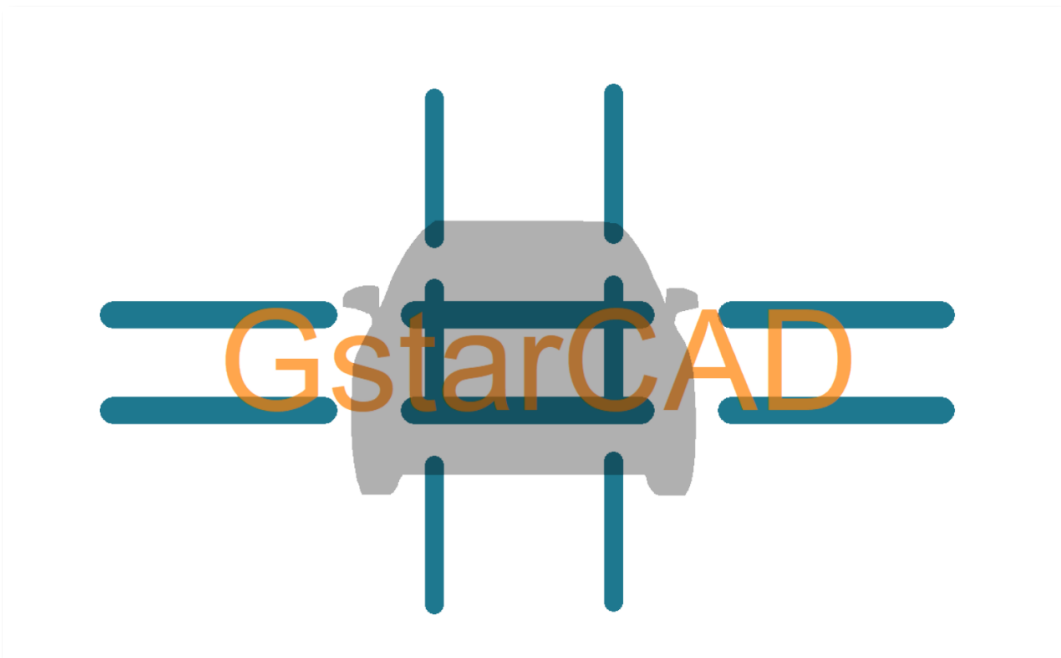


Plotted from GstarCAD 2021, the output image loses its transparency

- The Line Weight and Line Type are displayed correctly after plotting with transparency.

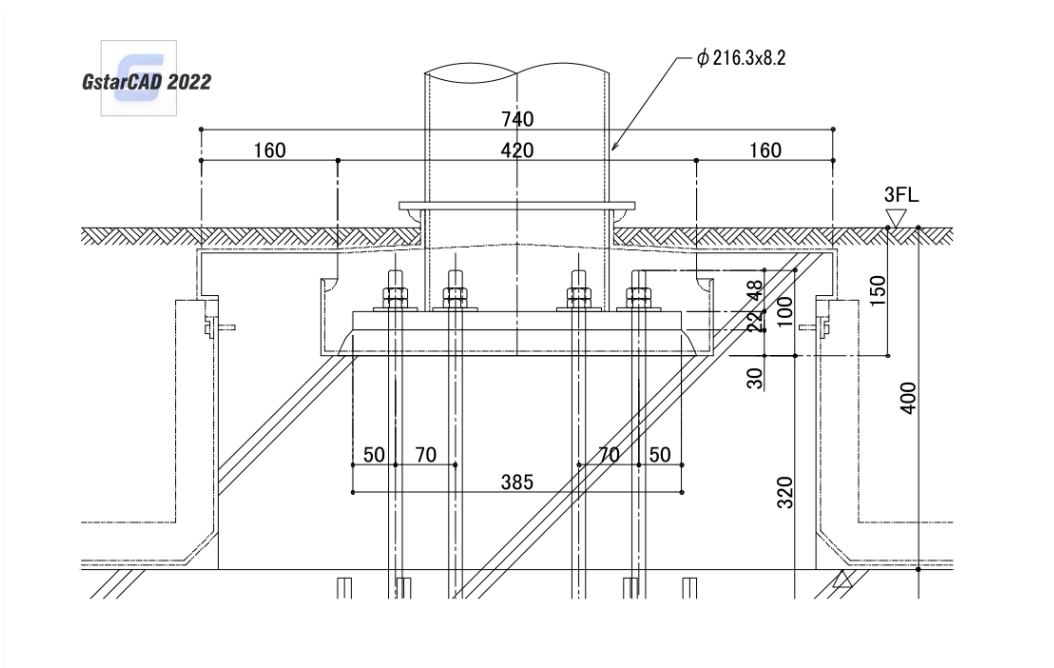


Plotted from GstarCAD 2022

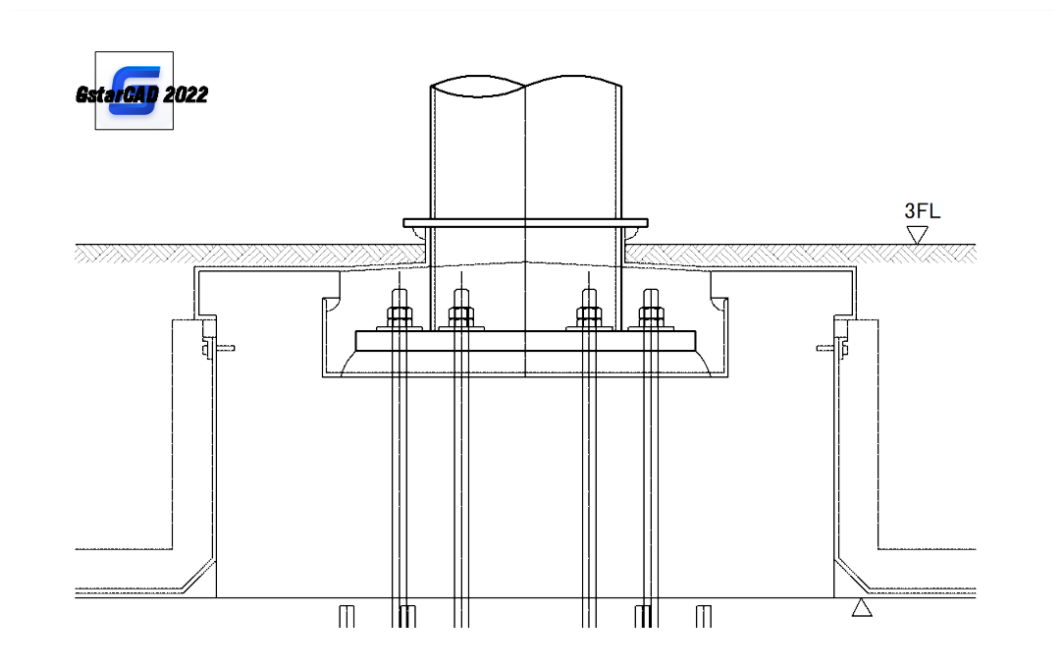


Plotted from GstarCAD 2021

- The annotative objects are displayed accurately and in high quality after plotting with transparency in GstarCAD 2022.



Plotted from GstarCAD 2022



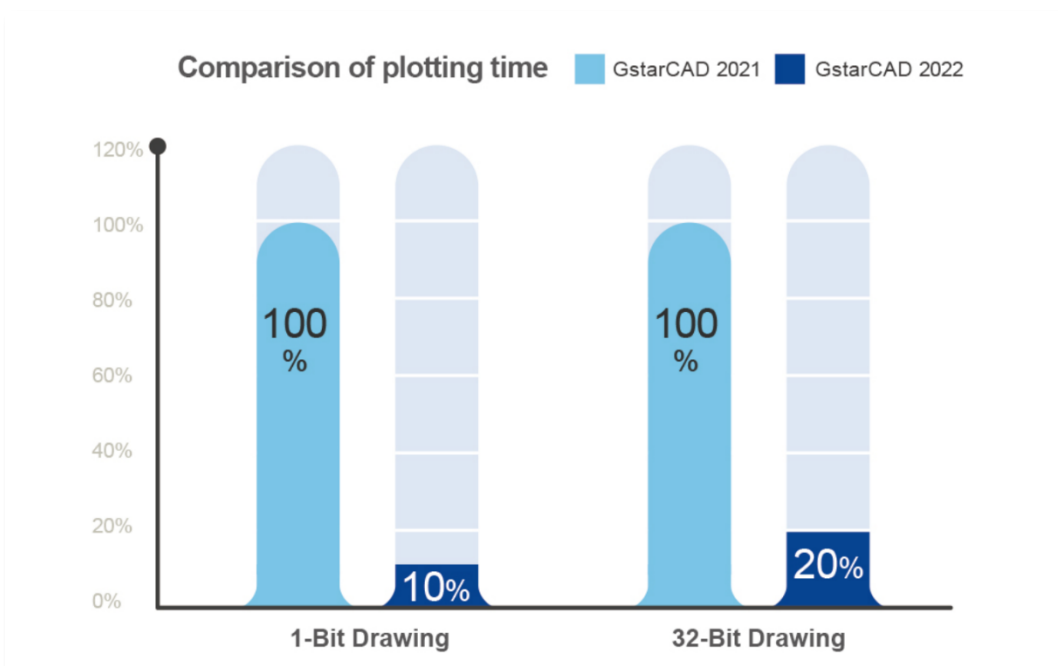
Plotted from GstarCAD 2021

4.12.3. Raster Image Plot

- Large raster images in different sizes and formats can be previewed and plotted smoothly, in GstarCAD 2022, you are able to plot even 1 billion pixels images.



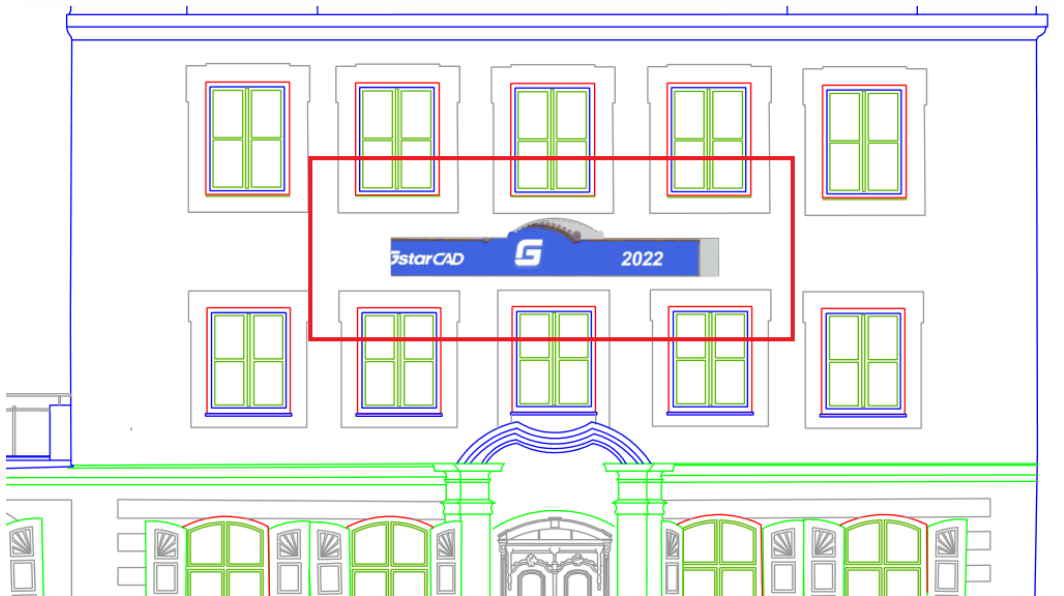
- The plotting speed of 1-Bit and 32-Bit color raster images increases exponentially in GstarCAD 2022, plotting speed of 1-Bit images has at most 10 times increases, and 32-Bit images has at most 5 times increases.



- The display after plotting rotated or cropped raster images is more accurate, and images after plotting will not have any offset.





Plotted from GstarCAD 2022



Plotted from GstarCAD 2021

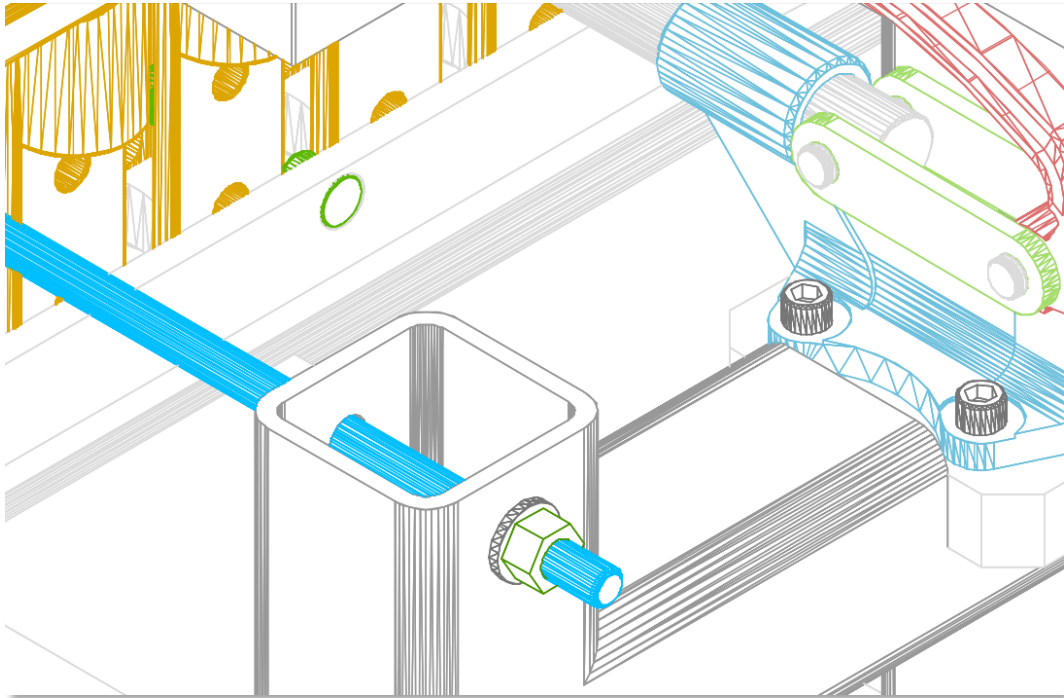
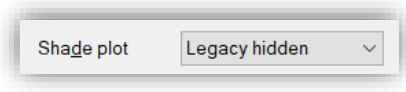
- When you plot a raster image to PDF, the size of the plotted PDF file is greatly reduced, while its original details are fully retained, as well as keeping the high quality of plotting in GstarCAD 2022.

 Large Raster Image Plot-2021.pdf	17/09/2021 16:44	PDF Document	245,505 KB
 Large Raster Image Plot-2022.pdf	17/09/2021 16:59	PDF Document	1,925 KB

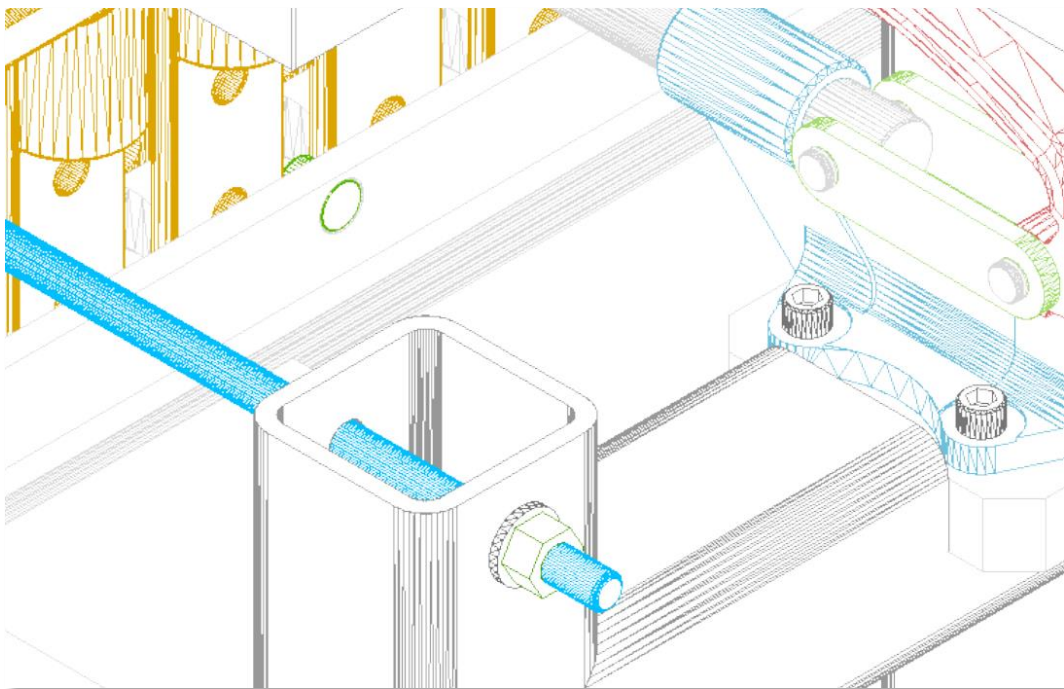
Same large raster image plotted to PDF

4.12.4. Hidden Shade Plot

The display after hidden shade plotting is significantly improved, which is much more accurate and clearer than before. And the lines, polylines, arcs, circles, ellipses and other objects after hidden shade plotting now have smoother boundaries.



Plotted from GstarCAD 2022



Plotted from GstarCAD 2021

4.13. Raster Image *Improvement*

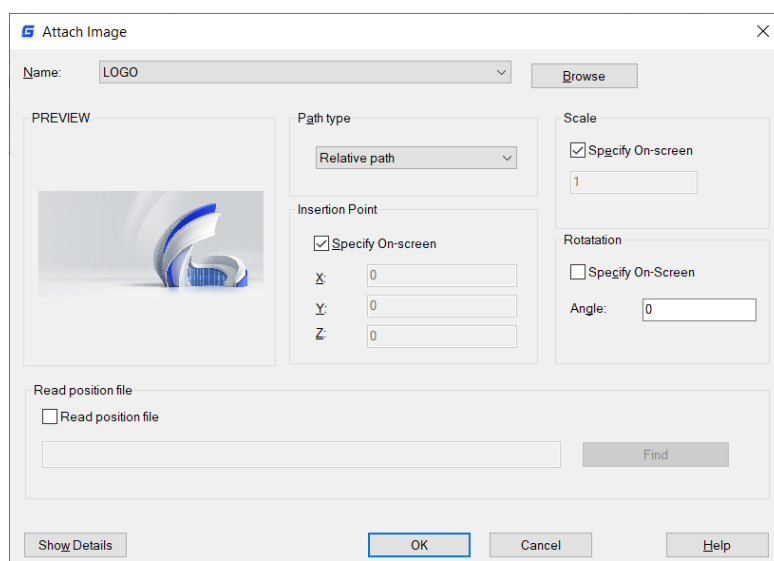
In GstarCAD 2022, more formats and larger size raster images are supported, the display of raster images modification is more accurate as well.

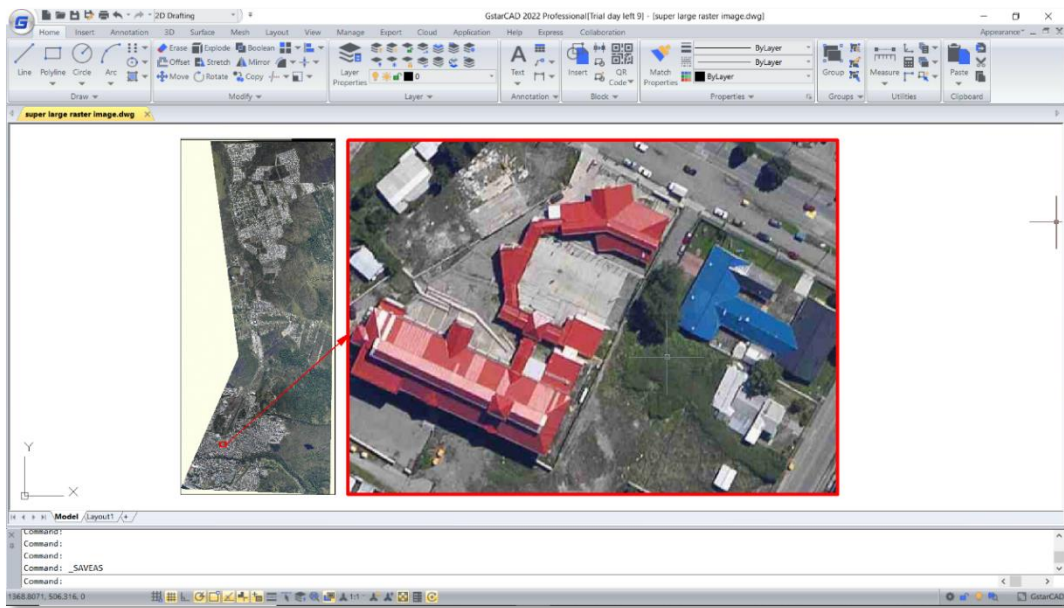
4.13.1. Formats

- 183 formats are available to be attached in GstarCAD 2022, greatly improving the compatibility of raster images.



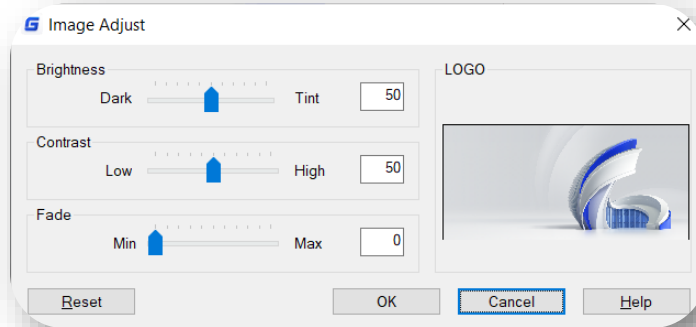
- You can attach, preview, modify and plot raster images in different formats and sizes, even 1 billion pixels raster image is supported.



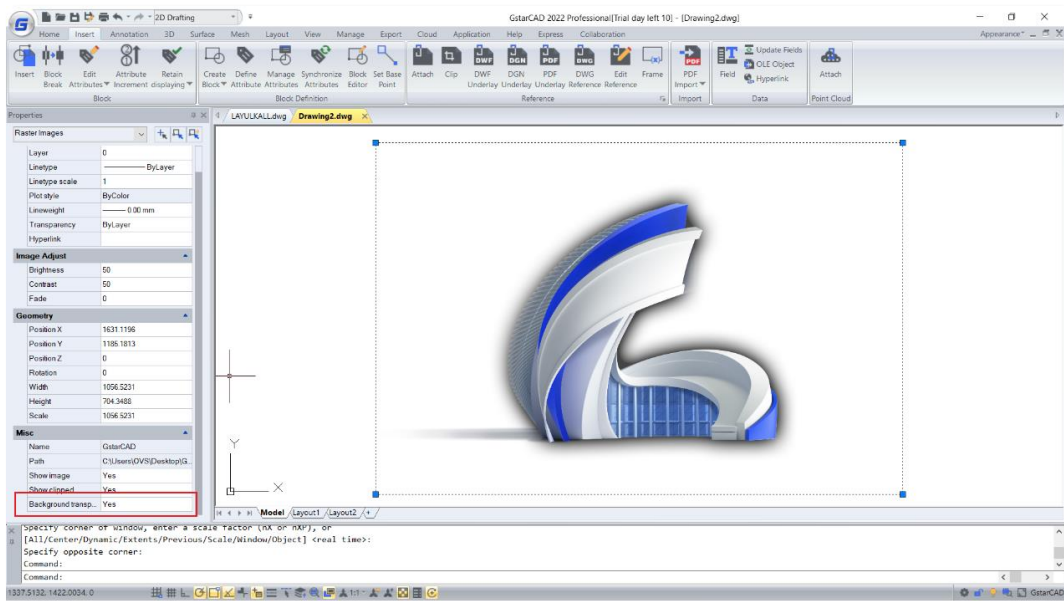


4.13.2. Display

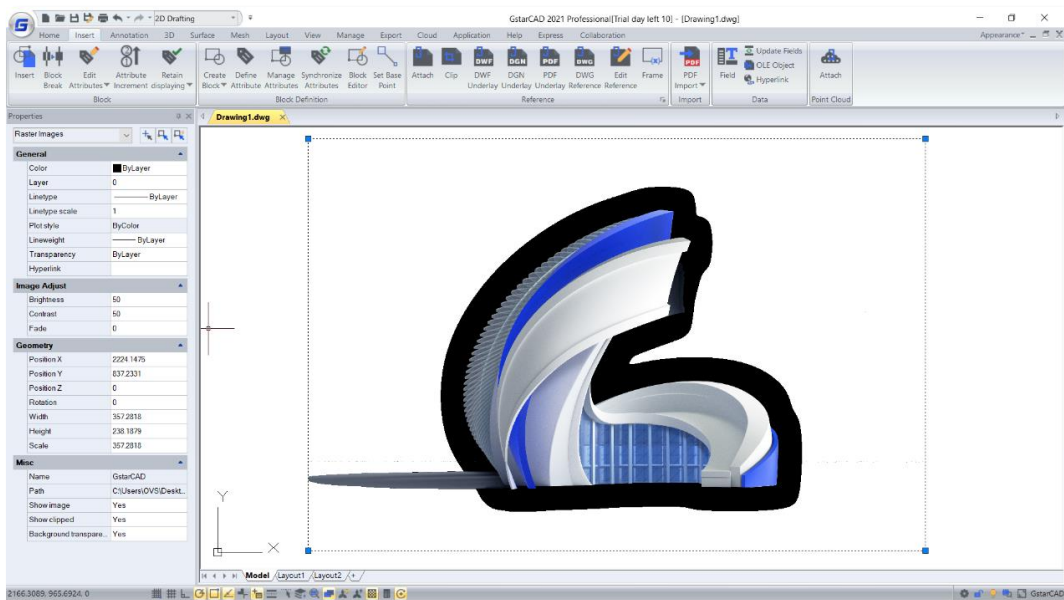
- In GstarCAD 2022, the effects of brightness, contrast, fade, and highlight modification are more accurate, the display after modification is also becoming better.



- In GstarCAD 2022, the display of attached images with transparency is more accurate when the 'Background transparency' is set to Yes.



In GstarCAD 2022



In GstarCAD 2021

4.13.3. Information

- You are able to insert an image successfully even if its file extension has been modified, and the image will not have any errors.
- The information of images like image resolution is inserted more accurate when you are attaching raster images in GstarCAD 2022.

ACET Interfaces Supported in GstarCAD 2022

ACET-ENT-GEOMEXTENTS	ACET-UI-TABLE-NAME-GET-CMD-LIST	ACET-PLINES-EXPLODE-WIDTH-DATA-GET
ACET-ENT-CURVEPOINTS	ACET-UI-TABLE-NAME-GET-DLG	ACET-PLINES-REBUILD-APPLY-WIDTHS
ACET-EXPLODE	ACET-UI-TABLE-NAME-GET-ENAME	ACET-PLINES-REBUILD-SET-ELEVATION
ACET-ERROR-INIT	ACET-UI-TABLE-NAME-GET-ITEM-LIST	ACET-SPINNER
ACET-ERROR-RESTORE	ACET-UI-TABLE-NAME-GET-PICKIT	ACET-LWPLINE-MAKE
ACET-ERROR	ACET-UI-TABLE-NAME-OBJECT-DATA	ACET-GO-TO-EXPRESS-PAGE
ACET-FILE-ATTR	ACET-UI-ENTSEL	ACET-GROUP-MAKE-ANON
ACET-FILE-BACKUP	ACET-UI-FENCE-SELECT	ACET-HATCH-LOOP-MAKE
ACET-FILE-BACKUP-DELETE	ACET-UI-POLYGON-SELECT	ACET-HATCH-LOOP-MAKE-DATA-GET
ACET-FILE-BACKUP-RESTORE	ACET-UI-SINGLE-SELECT	ACET-HATCH-LOOPEDGE-MAKE
ACET-FILE-CHDIR	ACET-UTIL-VER	ACET-POINT-FLAT
ACET-FILE-CWD	ACET-INSERT-ATTRIB-GET	ACET-PREF-SUPPORTPATH-LIST
ACET-FILE-COPY	ACET-INSERT-ATTRIB-MOD	ACET-PSPACE-VIEWPORT-ENAME
ACET-FILE-DIR	ACET-INSERT-ATTRIB-SET	ACET-R12-DXF-CONVERT
ACET-FILE-FIND	ACET-INSERT-SPACIAL-FILTER	ACET-RTOD
ACET-FILE-FIND-FONT	ACET-IS-SYMBOL-TABLE	ACET-TABLE-NAME-LIST
ACET-FILE-FIND-IMAGE	ACET-LAYER-LOCKED	ACET-TABLE-PURGE
ACET-FILE-FIND-ON-PATH	ACET-LAYER-LOCKED-LIST	ACET-TEMP-SEGMENT
ACET-FILE-MKDIR	ACET-LAYER-UNLOCK-ALL	ACET-TJUST
ACET-FILE-MOVE	ACET-LAYERP-MARK	ACET-TJUST-GROUP-CODES
ACET-FILE-OPEN	ACET-LAYERP-MODE	ACET-TJUST-KEYWORD
ACET-FILE-READDIALOG	ACET-LIST-ASSOC-APPEND	ACET-UCS-CAPTURE-VIEWPORTS
ACET-FILE-REMOVE	ACET-LIST-ASSOC-PUT	ACET-UCS-CMD
ACET-FILE-RMDIR	ACET-LIST-ASSOC-REMOVE	ACET-UCS-GET
ACET-FILE-SYSTIME-COMPARE	ACET-LIST-GROUP-BY-ASSOC	ACET-UCS-SET
ACET-FILE-WRITEDIALOG	ACET-LIST-INSERT-NTH	ACET-UCS-SET-Z
ACET-FILENAME-ACAD-ROOT	ACET-LIST-IS-DOTTED-PAIR	ACET-UCS-TO-OBJECT
ACET-FILENAME-ASSOCIATED-APP	ACET-LIST-ISORT	ACET-UNDO-BEGIN
ACET-FILENAME-DIR-ON-PATH	ACET-LIST-M-ASSOC	ACET-UNDO-END
ACET-FILENAME-DIRECTORY	ACET-LIST-PUT-NTH	ACET-UNDO-INIT
ACET-FILENAME-EXT-REMOVE	ACET-LIST-REMOVE-ADJACENT-DUPS	ACET-XDATA-GET
ACET-FILENAME-EXTENSION	ACET-LIST-REMOVE-DUPLICATES	ACET-XDATA-SET
ACET-FILENAME-PATH-REMOVE	ACET-LIST-REMOVE-NTH	ACET-GENERAL-PROPS-GET
ACET-FILENAME-SUPPORTPATH-REMOVE	ACET-LIST-SPLIT	ACET-GENERAL-PROPS-GET-PAIRS
ACET-FILENAME-VALID	ACET-LIST-TO-SS	ACET-GENERAL-PROPS-SET
ACET-HELP	ACET-ELIST-ADD-DEFAULTS	ACET-GENERAL-PROPS-SET-PAIRS
ACET-HELP-TRAP	ACET-GEOM-ANGLE-TO-ELLIPSEANGLE	ACET-ACAD-REFRESH
ACET-HOW-TO-GET-EXPRESS	ACET-GEOM-ANGLE-TRANS	ACET-ACADREACTOR-ID-ADD

ACET-INI-GET	ACET-GEOM-ARBITRARY-X	ACET-ACADREACTOR-ID-REMOVE
ACET-INI-SET	ACET-GEOM-ARC-3P-D-ANGLE	ACET-ACADREACTOR-ID-REMOVE-ALL
ACET-INIT-ADD-LIB-DIR	ACET-GEOM-VECTOR-SIDE	ACET-ACADREACTOR-ID-SWAP
ACET-INIT-EXPRESS-NOT-INSTALLED-MSG	ACET-GEOM-VERTEX-LIST	ACET-ACADREACTOR-IDS-GET
ACET-INIT-GET-LIB-DIR	ACET-GEOM-VIEW-POINTS	ACET-ALERT
ACET-INIT-PRODKEY	ACET-GEOM-Z-AXIS	ACET-ANGLE-EQUAL
ACET-INIT-GET-UPDATE	ACET-GEOM-ZOOM-FOR-SELECT	ACET-ANGLE-FORMAT
ACET-REG-DEL	ACET-GEOM-ARC-BULGE	ACET-APPID-DELETE
ACET-REG-GET	ACET-GEOM-ARC-CENTER	ACET-ARX-RE-LOAD
ACET-REG-PUT	ACET-GEOM-ARC-D-ANGLE	ACET-ARXLOAD-OR-BUST
ACET-REG-TREE-GET	ACET-GEOM-ARC-DELTA-ANGLE	ACET-AUTOLOAD-EXEC
ACET-REG-TREE-SET	ACET-GEOM-ARC-POINT-LIST	ACET-LSP-LOAD
ACET-SS-ANNOTATION-FILTER	ACET-GEOM-CALC-ARC-ERROR	ACET-BLINK-AND-SHOW-OBJECT
ACET-SS-CLEAR-PREV	ACET-GEOM-CROSS-PRODUCT	ACET-BLOCK-MAKE-ANON
ACET-SS-CONVERT-ELLIPSES-TO-PLINES	ACET-GEOM-DELTA-VECTOR	ACET-BLOCK-PURGE
ACET-SS-DRAG-MOVE	ACET-GEOM-ELLIPSE-ARC-LIST	ACET-BS-STRIP
ACET-SS-DRAG-ROTATE	ACET-GEOM-ELLIPSE-POINT-AT-ANGLE	ACET-CALC-BITLIST
ACET-SS-DRAG-SCALE	ACET-GEOM-ELLIPSE-POINT-AT-E-ANGLE	ACET-CALC-ROUND
ACET-SS-ENTDEL	ACET-GEOM-ELLIPSE-POINT-LIST	ACET-CALC-TAN
ACET-SS-FILTER	ACET-GEOM-ELLIPSE-TO-PLINE	ACET-CMD-EXIT
ACET-SS-FILTER-CURRENT-UCS	ACET-GEOM-ELLIPSEANGLE-TO-ANGLE	ACET-CURRENTVIEWPORT-ENAME
ACET-SS-FILTER-VALIDATE	ACET-GEOM-EXTENTS	ACET-DICT-ENAME
ACET-SS-FLT-CSPACE	ACET-GEOM-IMAGE-BOUNDS	ACET-DICT-MAKE
ACET-SS-INTERSECTION	ACET-GEOM-IMAGE-CLIP-LIST	ACET-DICT-NAME-LIST
ACET-SS-NEW	ACET-GEOM-INSERT-POINT-LIST	ACET-DISABLED-COMMAND
ACET-SS-REDRAW	ACET-GEOM-INTERSECTWITH	ACET-DTOR
ACET-SS-REMOVE	ACET-GEOM-IS-ARC	ACET-DXF
ACET-SS-REMOVE-DUPS-REVERSE	ACET-GEOM-LIST-EXTENTS	ACET-VIEWPORT-FROZEN-LAYER-LIST
ACET-SS-SCALE-TO-FIT	ACET-GEOM-LIST-FUZ	ACET-VIEWPORT-FROZEN-LAYER-LIST-SET
ACET-SS-SCALE-TO-FIT-BASE	ACET-GEOM-M-TRANS	ACET-VIEWPORT-LOCK-SET
ACET-SS-REMOVE-DUPS-EXTENTS-LIST	ACET-GEOM-MATRIX-TRANS	ACET-VIEWPORT-NEXT-PICKABLE
ACET-SS-SSGET-FILTER	ACET-GEOM-MIDPOINT	ACET-VIEWPORT-VPFREEZE
ACET-SS-TO-LIST	ACET-GEOM-MTXTBOX	ACET-WMFIN
ACET-SS-UNION	ACET-GEOM-OBJECT-END-POINTS	ACET-PARTIAL-MENU-STATUS-GET
ACET-SS-VISIBLE	ACET-GEOM-OBJECT-FUZ	ACET-PARTIAL-MENU-STATUS-SET
ACET-SS-ZOOM-EXTENTS	ACET-GEOM-OBJECT-NORMAL-VECTOR	ACET-PATH-TO-LIST
ACET-STR-COLLATE	ACET-GEOM-OBJECT-POINT-LIST	ACET-RE-MAKE
ACET-STR-ENV-EXPAND	ACET-GEOM-OBJECT-Z-AXIS	ACET-SMTP-SEND
ACET-STR-EQUAL	ACET-GEOM-PIXEL-UNIT	ACETAI_FFFILE
ACET-STR-ESC_WILDCARDS	ACET-GEOM-PLINE-ARC-INFO	ACETAI_NOFILE

ACET-STR-FIND	ACET-GEOM-PLINE-POINT-LIST	ACET:ABORTRETRYIGNORE
ACET-STR-FORMAT	ACET-GEOM-POINT-FUZ	ACET:YESNOCANCEL
ACET-STR-IS-PRINTABLE	ACET-GEOM-POINT-INSIDE	ACET:ARCHIVE
ACET-STR-LIST-SELECT	ACET-GEOM-POINT-ROTATE	ACET:ARX-LIB
ACET-STR-LR-TRIM	ACET-GEOM-POINT-SCALE	ACET:DEFBUTTON1
ACET-STR-M-FIND	ACET-GEOM-RECT-POINTS	ACET:DEFBUTTON2
ACET-STR-REPLACE	ACET-GEOM-SELF-INTERSECT	ACET:DEFBUTTON3
ACET-STR-SPACE-TRIM	ACET-GEOM-SS-EXTENTS	ACET:DEFBUTTON4
ACET-STR-TO-LIST	ACET-GEOM-SS-EXTENTS-ACCURATE	ACET:DIRECTORY
ACET-STR-WCMATCH	ACET-GEOM-SS-EXTENTS-FAST	ACET:FAS-LIB
ACET-SYS-BEEP	ACET-GEOM-TEXTBOX	ACET:HELPPFILE
ACET-SYS-COMMAND	ACET-GEOM-TRANS-IMAGE-TO-UCS	ACET:HIDDEN
ACET-SYS-CONTROL-DOWN	ACET-GEOM-TRANS-UCS-TO-IMAGE	ACET:ICONINFORMATION
ACET-SYS-KEYSTATE	ACET-GEOM-TXTBOX	ACET:ICONQUESTION
ACET-SYS-LASTERR	ACET-GEOM-UNIT-VECTOR	ACET:ICONSTOP
ACET-SYS-LMOUSE-DOWN	ACET-GEOM-VECTOR-ADD	ACET:ICONWARNING
ACET-SYS-PROCID	ACET-GEOM-VECTOR-D-ANGLE	ACET:IDABORT
ACET-SYS-SHIFT-DOWN	ACET-GEOM-VECTOR-PARALLEL	ACET:IDCANCEL
ACET-SYS-SLEEP	ACET-GEOM-VECTOR-SCALE	ACET:IDCLOSE
ACET-SYS-SPAWN	ACET-FULL-DWGNAME	ACET:IDHELP
ACET-SYS-TERM	ACET-GETVAR	ACET:IDIGNORE
ACET-SYS-WAIT	ACET-GETVAR-CPROFILE	ACET:IDNO
ACET-UI-STATUS	ACET-GETVAR-DWG	ACET:IDOK
ACET-UI-MESSAGE	ACET-GETVAR-FIXED-PROFILE	ACET:IDRETRY
ACET-UI-PICKDIR	ACET-SET-CMDECHO	ACET:IDYES
ACET-UI-TXTED	ACET-SETVAR	ACET:OK
ACET-UI-PROGRESS	ACET-SETVAR-CPROFILE	ACET:OKCANCEL
ACET-UI-PROGRESS-DONE	ACET-SETVAR-DWG	ACET:PRODKEY
ACET-UI-PROGRESS-INIT	ACET-SETVAR-FIXED-PROFILE	ACET:READONLY
ACET-UI-PROGRESS-SAFE	ACET-VAR-GETVAR	ACET:RETRYCANCEL
ACET-UI-M-GET-NAMES	ACET-VAR-SETVAR	ACET:SYSTEM
ACET-UI-GETCORNER	ACET-SYSVAR-RESTORE	ACET:VARALL
ACET-UI-GETFILE	ACET-SYSVAR-SET	ACET:VARDWG
ACET-UI-GET-LONG-NAME	ACET-PLINE-IS-2D	ACET:VARFIX
ACET-UI-DRAG	ACET-PLINE-MAKE	ACET:VARPRO
ACET-UI-TABLE-NAME-GET	ACET-PLINE-SEGMENT-LIST	ACET:WEBSITE
ACET-UI-TABLE-NAME-FORMAT	ACET-PLINE-SEGMENT-LIST-APPLY	ACET:YESNO
ACET-UI-TABLE-NAME-CHECK-FLAGS	ACET-PLINES-EXPLODE	ACET:ACETAUTO

Gstarsoft Co., Ltd

Gstarsoft is a recognized leading provider of 2D/3D CAD software and solutions for industries involving AEC, Mechanical and Manufacturing, Electrical and Electronics, GIS, Survey and Mapping, Civil Engineering, etc. With 27-year proud history of technology innovation and practice, Gstarsoft provides fast, powerful and DWG-compatible CAD software and solutions for worldwide customers and partners. Today there are 600,000+ installations of GstarCAD products and 30,000,000+ users of DWG FastView in more than 100 countries around the world.



GstarCAD 2022



■ <https://www.gstarcad.net/>